

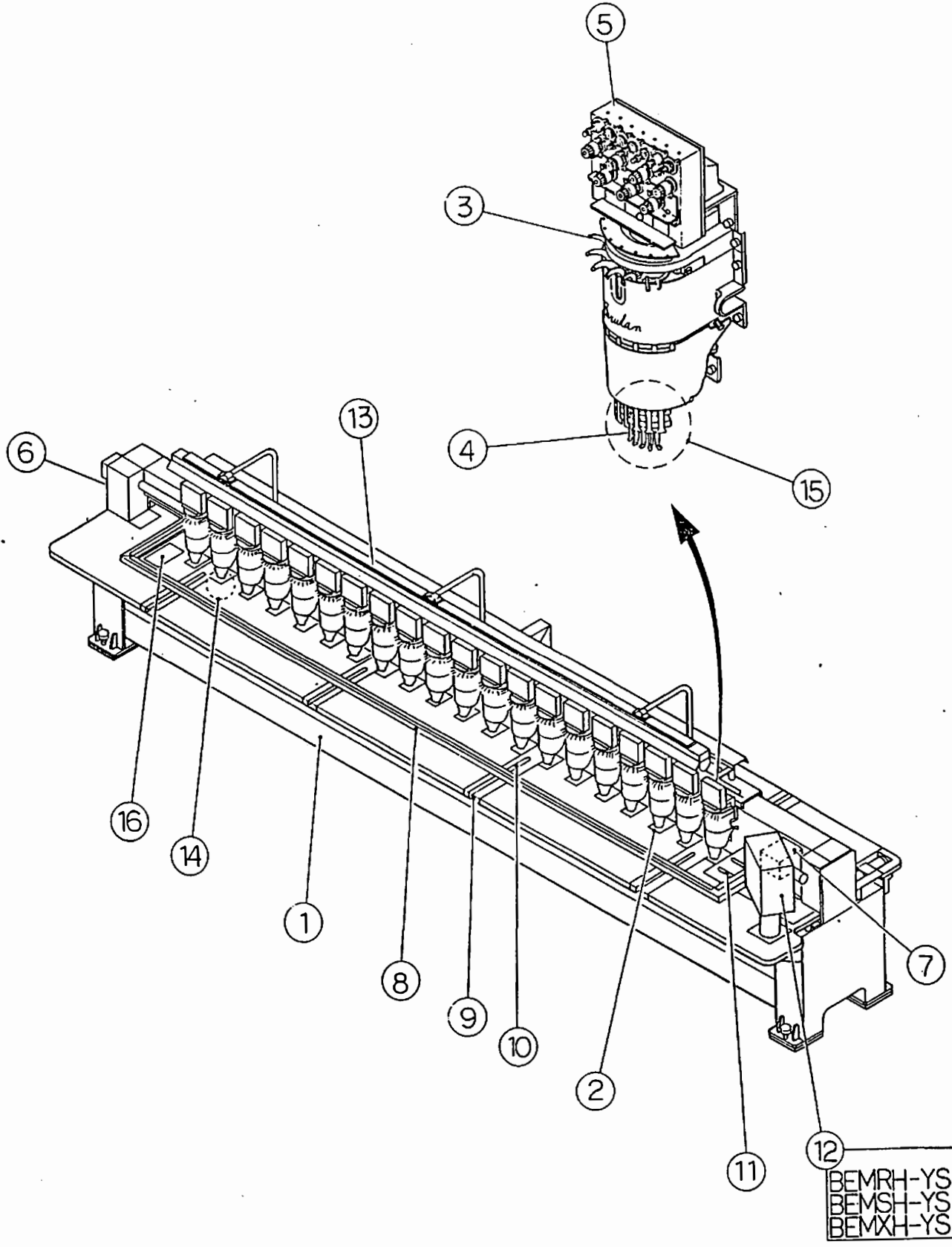
Barudan

BEMR+/-YS

Barudan

Machine layout

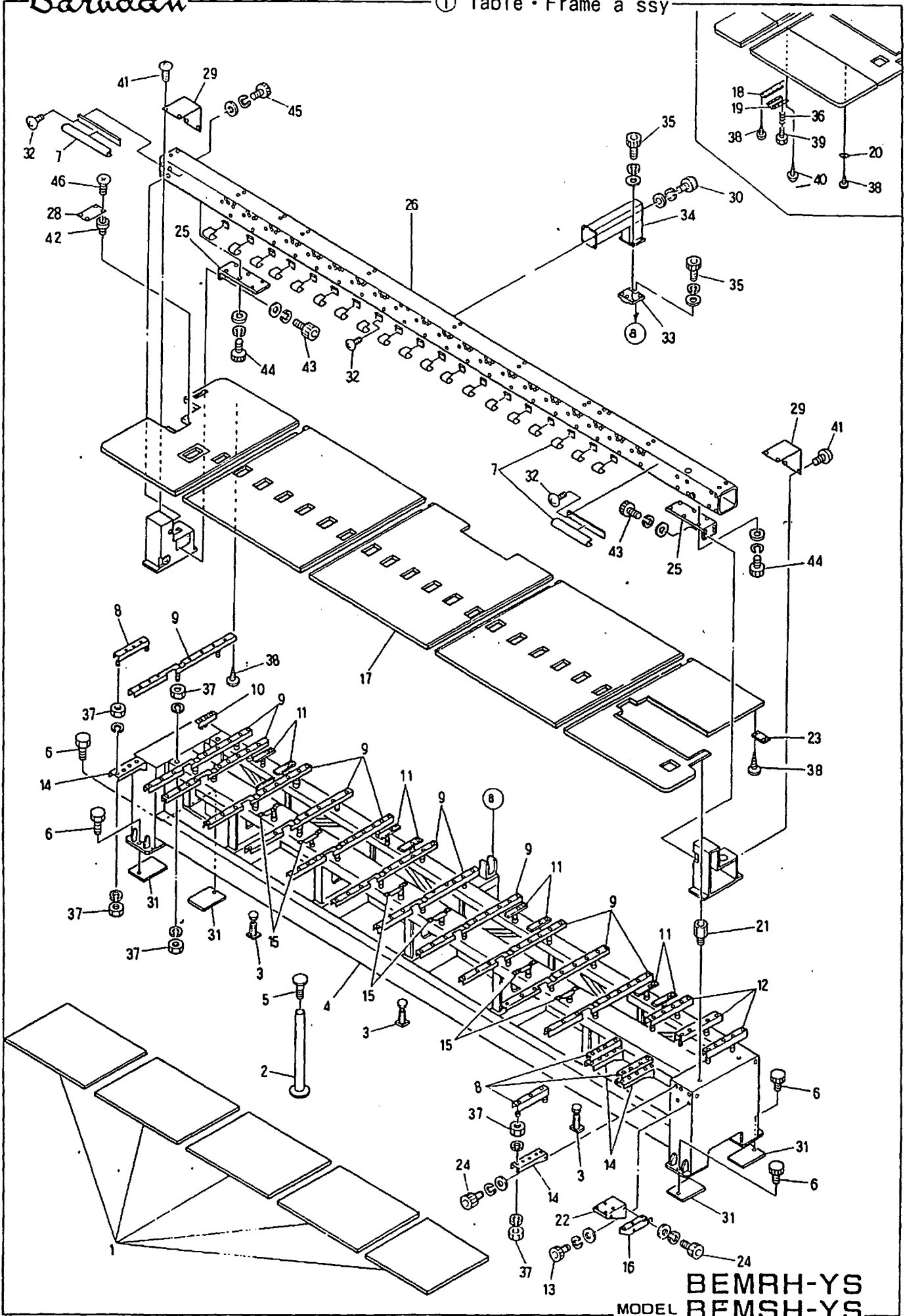
BEMSH-YS
BEMXH-YS



MODEL
 BEMRH-YS
 BEMSH-YS
 BEMXH-YS

Barudan

① Table · Frame a' ssy

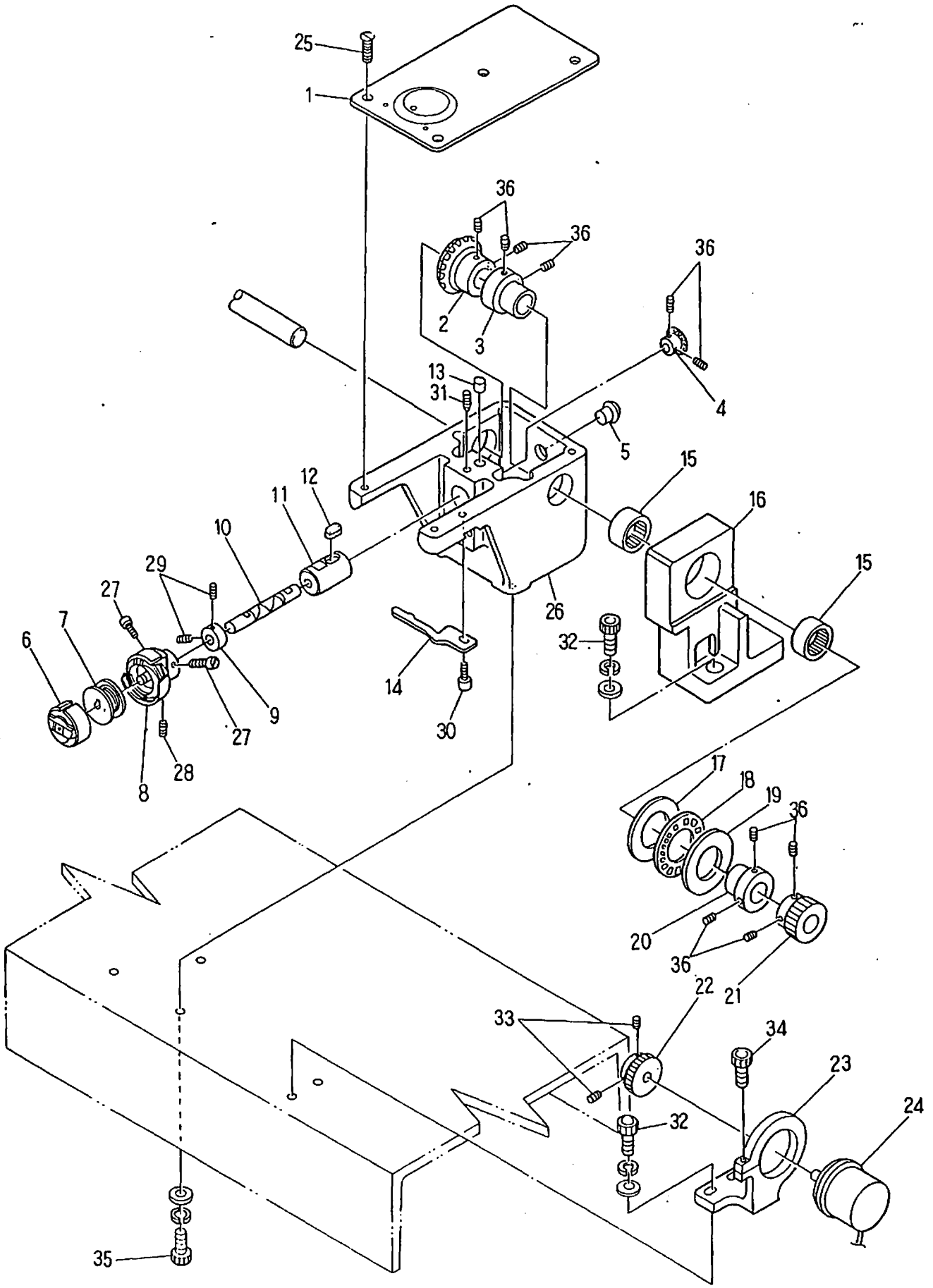


MODEL
BEMRH-YS
BEMSH-YS
BEMXH-YS

① Table · Frame a' s s y

(*Change the LIST No by machine type)

ITEM	LIST No	DESCRIPTION	QTY	REMARK
1	1KH82024053045G	Shelf board (MSH-YS-20 450×240/530)	1	※
2	WW140070	Table holder	9	※
3	HP120020	Mib mid jack bolt		
4	1AH82024053045G	Frame (MSH-YS-20 450×240/530)	1	※
5	A9012213	Level adjuster (C-1275-A-4)		
6		Hex. bolt M20×65	5	※
7	1SHB20240530J	Upper shaft cover set	1	
8	HP140111	Table support (310L)	3	
9	HP141450	Table support (1160L) with notch	3	
10	HH140260	Table support (215L)	2	※
11	HP140841	Table support (215L)	2	
12	HP140490	Table support (480L)	1	※
13		Hex. bolt M8×30	2	
14	HP140120	Table support bracket (TDH)	2	
15	HP141080	Table support (230L)	1	※
16	HP14013045	Table support (R) Front (360L) (TDH)	1	※
17	1BH82024053045G	Table (MSH-YS-20 450×240/530)		
18	HP14010085	Table support (for H strok 850)	1	※
19	HP140090	Table support		
20	HP141090	Morable table support		
21	HP140170	Table support bolt	16	
22	HP512320	Controller fixing stay	1	
23	KC140121	Table reinforcement plate	1	※
24		Hex. socket bolt M8×20	4	
25	HP130021	Bridge support		
26	1EHB20240530J	Bridge (SH-YS-20 P=240/530)	8	
27		Hex. socket bolt M6×15		
28	HP321110	Lower shaft connecting coupling cover	8	※
29	HB310180	Bridge cover	8	
		Hex. socket bolt M6×15		
30		Hex. socket bolt M8×25	1	
31	HP310260	Base plate (200×200×11)	2	
32		Truss screw M5×10	1	
33	HP130050	Bridge support base (Center)		
34	HB13001045	Bridge support (Center)	2	
35		Hex. socket bolt M8×20	1	
36	HH140940	Spring		
37		Hex. nut 3/8		
38		Wood screw 5.1×25		
39		Hex. bolt M8×25		
40		Wood screw 5.1×25		
41		Truss screw M5×10		
42		Not (C) M4		
43		Hex. socket bolt M10×30		
44		Hex. socket bolt M10×40		



BEMRH-YS
BEMSH-YS
BEMXH-YS

MODEL

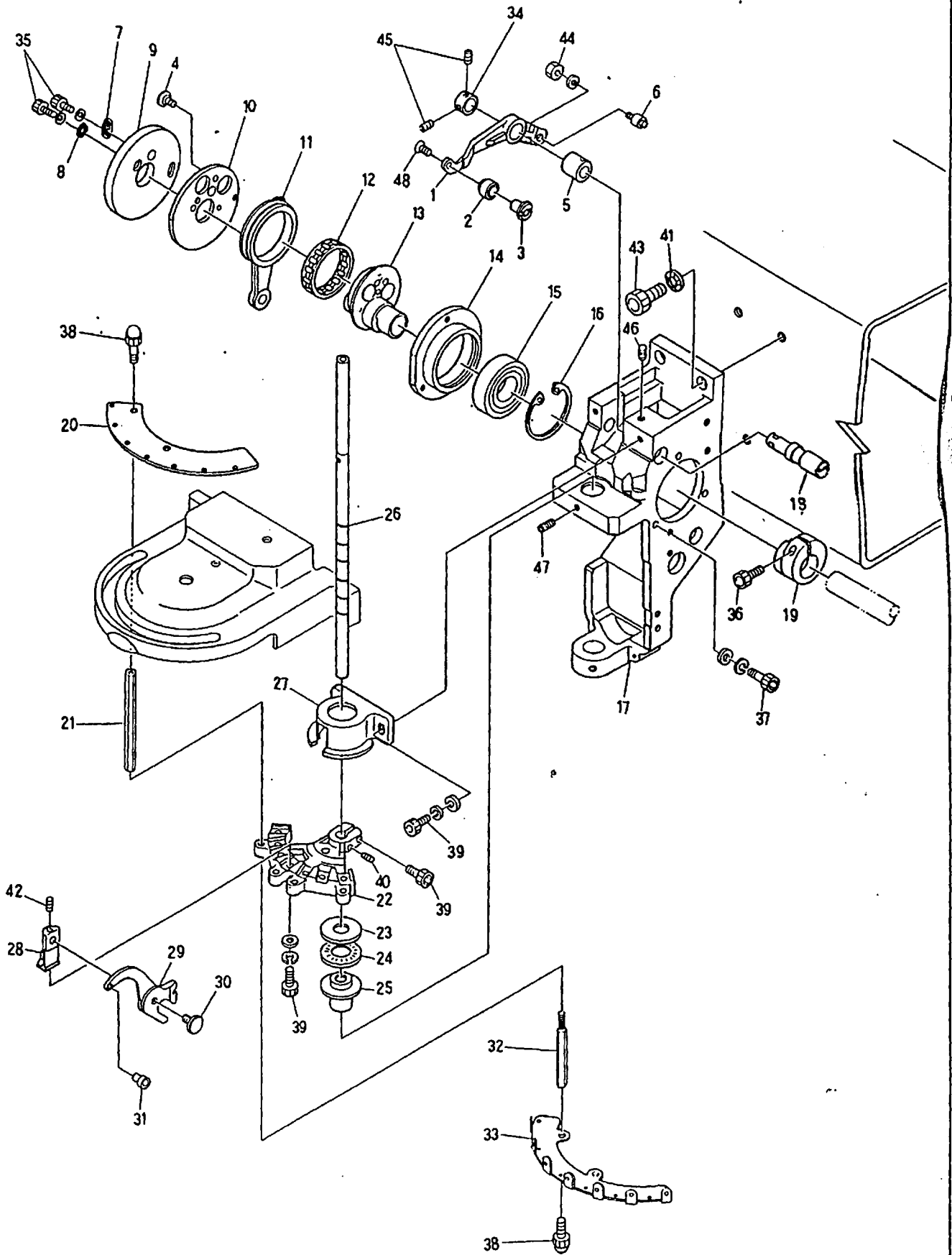
② Bed a'ssy

(*Change the LIST No by machine type)

ITEM	LIST No	DESCRIPTION	QTY	REMARK
1	HP250763	Throat plate	1	※
2	HP321082	Lower connecting gear (L)	1	
3	HP321090	Lower shaft collar	1	
4	HP220712	Lower shaft gear (S)	1	
5	A9014022	D=12 Blanking cover	1	
6	KF220440	Bobbin case (SC35-NS)	1	for small bobbin
	KF220302	Bobbin case (8C-DBM) (Z2)	1	for middle bobbin
7	KF220410	Bobbin	1	for small bobbin
	KF220421	Bobbin (HSM) (DBM)	1	for middle bobbin
8	KF220780	Rotating hook (HSL-A-MQTS)	1	for small bobbin
	HB220010	Rotating hook (HSM-A-MQTS)	1	for middle bobbin
9	HP220680	Lower shaft collar	1	for small bobbin
	HK220681	Lower shaft collar	1	for middle bobbin
	HP220720	Lower (Bevel gear)	1	for small bobbin
	HP220730	Lower shaft for Middle bobbin (Bevel gear)	1	for middle bobbin
11	HP220701	Lower metal (Bevel gear)	1	
12	KL220140	Oil felt C	2	
13	HH220570	Lower shaft metal oil felt	1	
14	KF220510	Rotating hook bobbin case holder position bracket	1	※ ✓
15	A9011111	Needle bearing (TLA-201Z)	2	
16	HB320030	Rotating hook shaft connecting bearing housing	1	for middle bobbin
	HB320050	Rotating hook shaft connecting bearing housing	1	for small bobbin
17	A9010101	Thrust bearing (WS81104)	1	
18	A9010100	Thrust bearing (AXK1104)	1	
19	A9010102	Thrust bearing (GS81104)	1	
20	HH481970	Pulse motor connecting shaft collar	1	
21	HP321710	Encoder driving gear No 1	1	
22	HP321720	Encoder driving gear No 2	1	
	HP331922	Encoder support	1	
24	KN511020	Position coder (for machine 051)	1	
25	KF250900	Throat plate set screw (SM11/64 40×7)	3	
26	HP210341	Bed (Bevel gear)	1	for small bobbin
	HP211050	Bed (Bevel gear)	1	for middle bobbin
27		Screw (SM11/64 40×5)		
28		Screw (SM11/64 40×4)		
29		Hex. socket set screw M4×5		
30		Screw M5×8		
31		Hex. socket set screw M5×10		
32		Hex. socket bolt M5×18		
33		Hex. socket set screw M4×8		
34		Hex. socket bolt M4×18		
35		Hex. socket bolt M6×25		
36		Hex. socket set screw M5×6		

Barudan

③ Take up lever a' ssy



MODEL BEMRH-YS
BEMSH-YS
BEMXH-YS

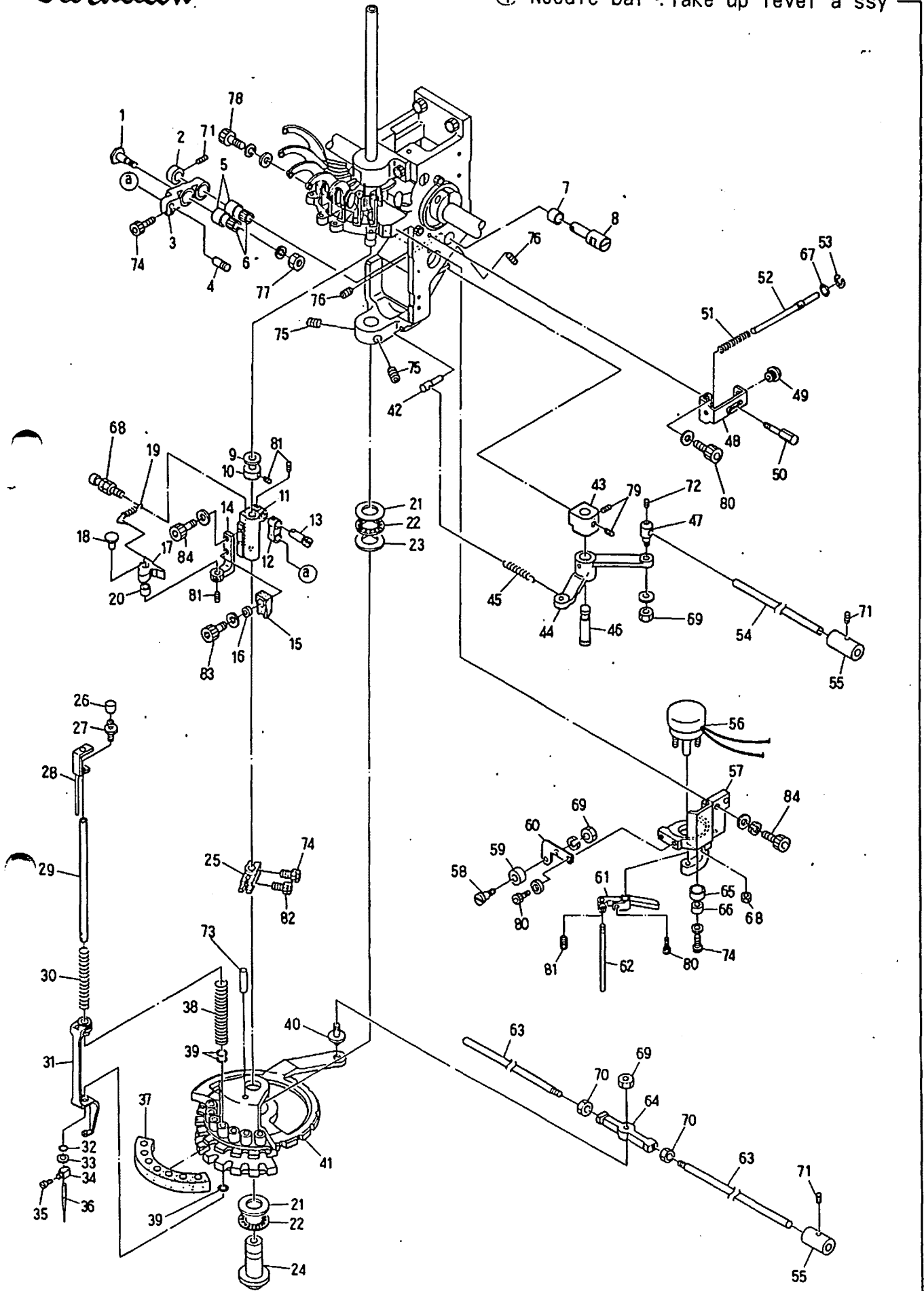
③ Take up lever a'ssy

(N=Needle O'ty)

ITEM	LIST No	DESCRIPTION	Q'TY	REMARK
1	HB 2 3 0 1 0 0	Take up lever driving lever	1	
2	HB 2 3 0 3 2 0	Take up lever driving roller	1	
3	HB 2 3 0 3 3 1	Take up lever driving roller shaft	1	
4	HB 2 3 0 6 2 0	pan screw	3	
5	HB 2 3 0 1 1 0	Take up lever driving lever metal	1	
6	KF 2 3 0 5 0 0	Take up lever roller a'ssy	1	
7	HB 2 3 0 0 8 0	Washer for cam (2)	1	
8	HB 2 3 0 0 7 0	Washer for cam (1)	1	
9	HB 2 3 0 0 6 1	Take up lever cam H6	1	for small bobbin
	HB 2 3 0 4 9 1	Take up lever cam J1	1	for middle bobbin
10	HB 2 3 0 0 5 0	Take up lever cam base	1	
11	HB 2 3 0 0 2 0	Needle bar crank rod	1	
12	HB 2 3 0 3 4 0	Needle roller (8Q-K38×41×8.8)	1	
13	HB 2 3 0 0 1 1	Take up lever driving cam (eccentric 9.2)	1	
14	HB 2 3 0 0 3 0	Bearing case	1	
15	A 9 0 1 0 0 1 7	Boll bearing (6004Z2)	1	
16	A 9 0 1 2 1 6 3	C-Ring φ42	1	
17	HB 2 1 0 0 1 0	Arm	1	
18	HB 2 3 0 0 9 0	Take up lever driving lever fixing pin	1	
19	HB 2 3 0 0 4 0	Needle bar driving cam set collar	1	
20	HB 2 4 0 1 8 0	Thread guide plate (7)	1	
	HB 2 4 0 2 9 0	Thread guide plate (5)	1	
21	HB 2 4 0 1 5 1	Thread guide fixing shaft (Upper)	2	
22	HB 2 3 0 2 9 1	Take up fixing bracket	1	
23	A 9 0 1 1 1 5 2	Thrust needle bearing (WS1528)	1	
24	A 9 0 1 1 0 2 1	Thrust bearing NTB-1528	1	
25	HB 2 3 0 1 5 0	Driving shaft Upeer metal	1	
26	HB 2 3 0 4 8 1	Driving shaft	1	
27	HB 2 3 0 1 2 0	Take up lever guide	1	
28	HB 2 3 0 3 0 1	Take up lever base	N×1	
29	HB 2 3 0 1 3 0	Take up lever	N×1	
30	HB 2 3 0 3 1 0	Take up lever shaft	N×1	
31	KF 2 3 0 5 8 0	Thread guide	N×1	
32	HB 2 4 0 1 6 1	Thread guide fixing shaft (Lower)	2	
33	HB 2 4 0 1 7 1	Thread hanger (7)	1	
	HB 2 4 0 2 8 0	Thread hanger (5)	1	
34	HB 2 3 0 1 6 0	Driving shaft set collar		
35		Hex. socket bolt M4×8		
36		Hex. socket bolt M5×18		
37		Hex. socket bolt M4×15		
38		Cap bolt M1×6		
39		Hex. socket bolt M4×12		
40		Hex. socket set screw M4×5		
41		Spring 8		
42		Hex. socket set screw M3×6		

Barudan

④ Needle bar .Take up lever a'ssy



MODEL BEMRH-YS
BEMSH-YS
BEMXH-YS

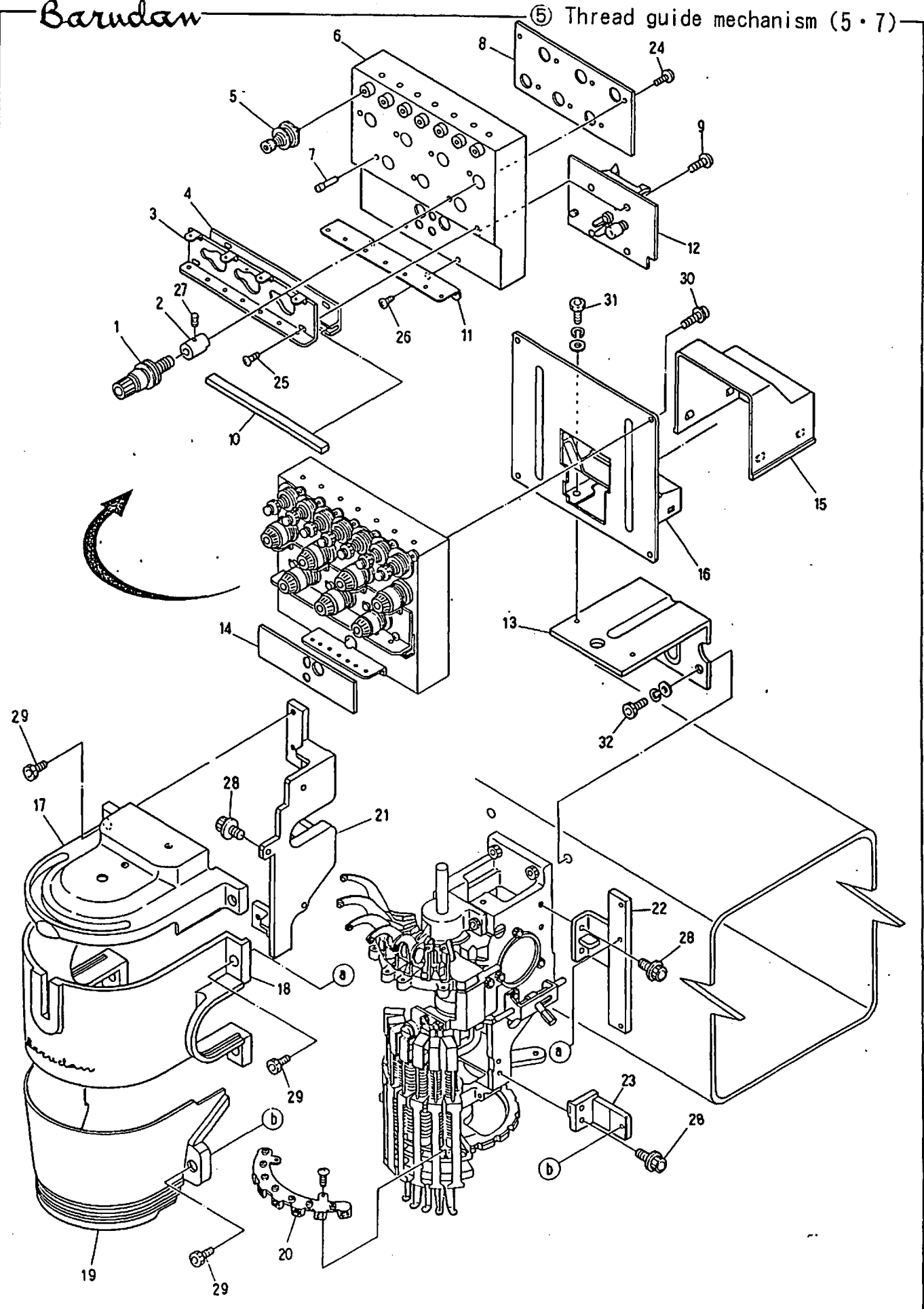
④ Needle bar • Jump a'ssy

(*Change the PART No. by machine type)
(N=Needle Q'ty)

ITEM	LIST No	DESCRIPTION	Q'TY	REMARK
1	HB230260	Needle bar driver lever connecting pin	1	
2	HB230270	Needle bar driver lever fixed pin set collar	1	
3	HB230240	Needle bar driving lever	1	
4	HB230220	Needle bar driving pin (B)	1	
5	HB230350	Out side collar (OR11×14×10×2P×2)	2	
6	HB230360	Needle roller (8Q-K8×11×10)	2	
7	HB230280	Needle bar driving lever fixed pin collar	1	
8	HB230250	Needle bar driving lever fixed pin	1	
9	A9012164	Thrust washer (R-TW0815)	1	
10	HB230160	Driving shaft set collar	1	
11	HB230231	Needle bar driver block	1	
12	HB230200	Needle bar driving link	1	
13	HB230210	Needle bar driving pin (A)	1	
14	HB230371	Needle bar driver fixing base	1	
15	HB230414	Needle bar driver stopper	1	
16	HB230420	Needle bar driver stopper set collar	1	
17	HB230381	Needle bar driver	1	
18	HB230390	Needle bar driver fixed pin	1	
19	HB230401	Needle bar spring	1	
20	A9012190	DU Bush (MBO606DU)	1	
21	A9011023	Thrust bearing (GS1528)	2	
22	A9011021	Thrust bearing (NTB-1528)	2	
23	A9011022	Thrust washer (AS-1528)	1	
24	HB230140	Driving shaft Lower metal	1	
25	HB230170	Driving shaft fixing plate	1	
26	KN231350	Needle bar cap	N×1	
27	HB230531	Needle bar guide seting screw	N×1	
28	HB230521	Needle bar guide	N×1	
29	HB230510	Needle bar	N×1	
30	HB230540	Needle bar spring (Upper)	N×1	
31	KG230020	Pressure foot	N×1	
32	KF230920	O-Ring (L)	N×1	
33	KF230930	Washer	N×1	
34	KF230230	Needle clamp	N×1	
35	KF230240	Needle clamp screw (SM9/64)	N×1	
36	KF230250	Needle (DBK5-11)	N×1	
37	KN231700	Turret plate oil pad	1	
38	KF230210	Pressure foot spring	N×1	
39	KF230910	O-Ring (S)	N×3	
40	HB230550	Turret plate joint pin	1	
41	HB230441	Turret plate (CF)	1	
	HB230431	Turret plate (US)	1	
42	KF230670	Lock lever spring pin	1	
43	HB230180	Lock lever bracket	1	
44	KL230280	Lock lever	1	

Barudan

⑤ Thread guide mechanism (5 · 7)



BEMRH-YS
MODEL BEMSH-YS
BEMXH-YS

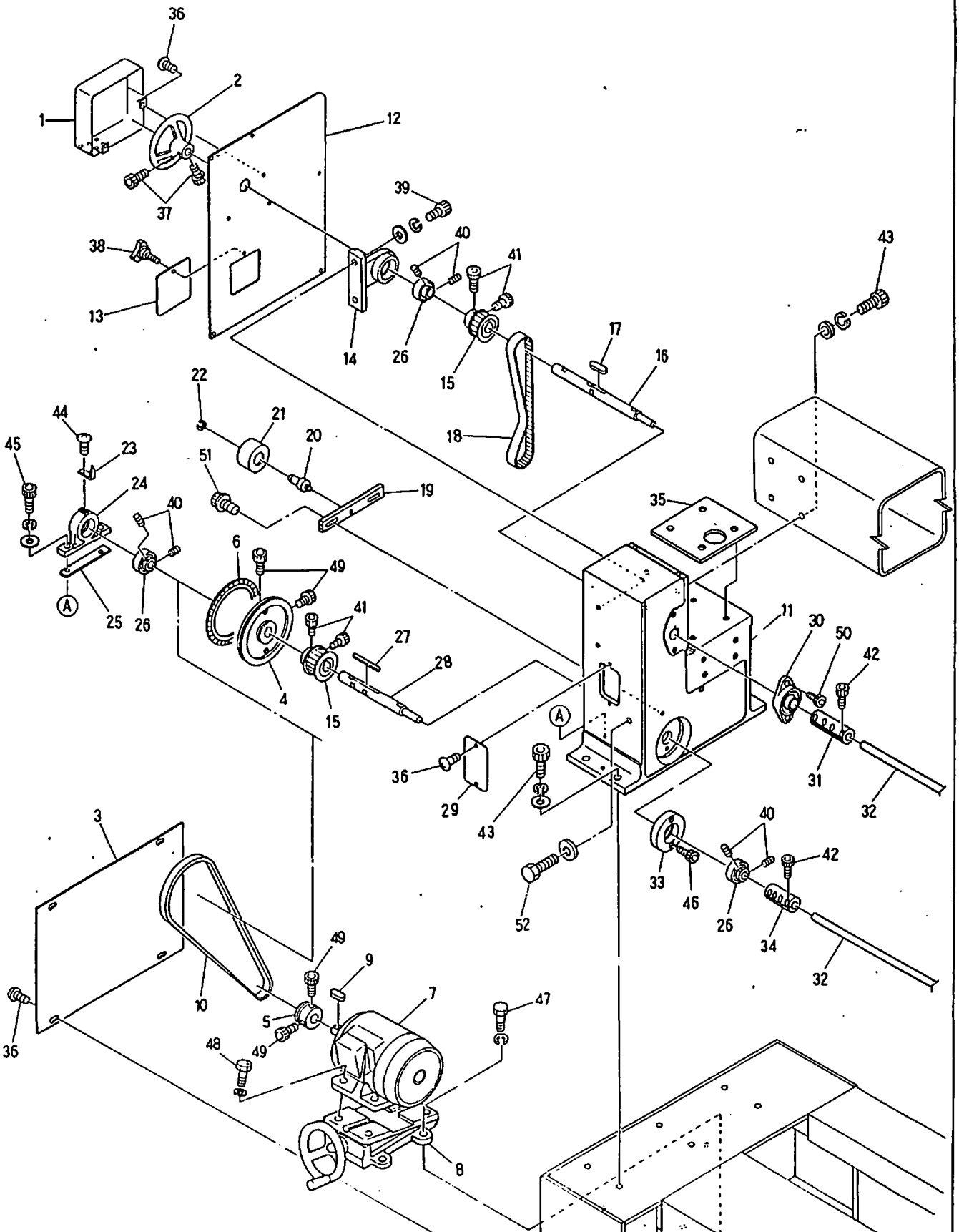
⑤ Thread guide mechanism(5・7)

(※Change the LIST No. by machine type)
(N=Needle O'ty)

ITEM	LIST No.	DESCRIPTION	QTY	REMARK
1	HP241410	Dial type tension unit complete	N×1	
2	HP241150	Tension base (with screw)	N×1	
3	HP241180	First thread guide (7)	1	
	HP241170	First thread guide (5)	1	
4	HP241460	Thread guide felt fixing plate (7)	1	
	HP241450	Thread guide felt fixing plate (5)	1	
5	KG241020	Upper tension unit complete US	N×1	
6	HP241122	Tension base (5)	1	HP241160
	HP241112	Tension base (7)	1	HP241150 HP241160 HP241150
7	HP241160	Upper thread detection pin	N×1	
8	HP241381	Tension earth plate (7)	1	
	HP241371	Tension earth plate (5)	1	
9		Pan screw M3×4		
10	HP241480	Thread guide felt (7)	1	
	HP241470	Thread guide felt (5)	1	
11	HB240260	Second thread guide plate (7)	1	
	HB240270	Second thread guide plate (5)	1	
12	EBY00800	EMP-001 Head board	1	
13	HB240300	Tension base bracket	2	
14	KU241400	Tension base label	1	
15	KB240100	Tension cable cover	1	
16	KB240060	Tension base (7)	1	
	KB240070	Tension base (5)	1	
17	HB240200	Sewing head cover (A)	1	
18	HB240210	Sewing head cover (B)	1	
19	HB240220	Sewing head cover (C)	1	
20	KG250010	Thread end trap unit a'ssy (7)	1	
	HP250050	Thread end trap unit a'ssy (5)	1	
21	HB240230	Sewing head fixing bracket (A)	1	
22	HB240240	Sewing head fixing bracket (B)	1	
23	HB240250	Sewing head fixing bracket (C)	1	
24		Pan screw M3×4		
25		Truss screw M4×6		
26		Tapping screw M3.5×8		
27		Set screw (SM11/64 40×5.5)		
28		Hex. socket flange bolt M4×12		
29		Hex. socket bolt M4×6		
30		Pan screw with washer M4×8		
31		Hex. socket bolt M5×8		
32		Hex. socket bolt M5×20		

Barudan

⑥ Drive a' ssy



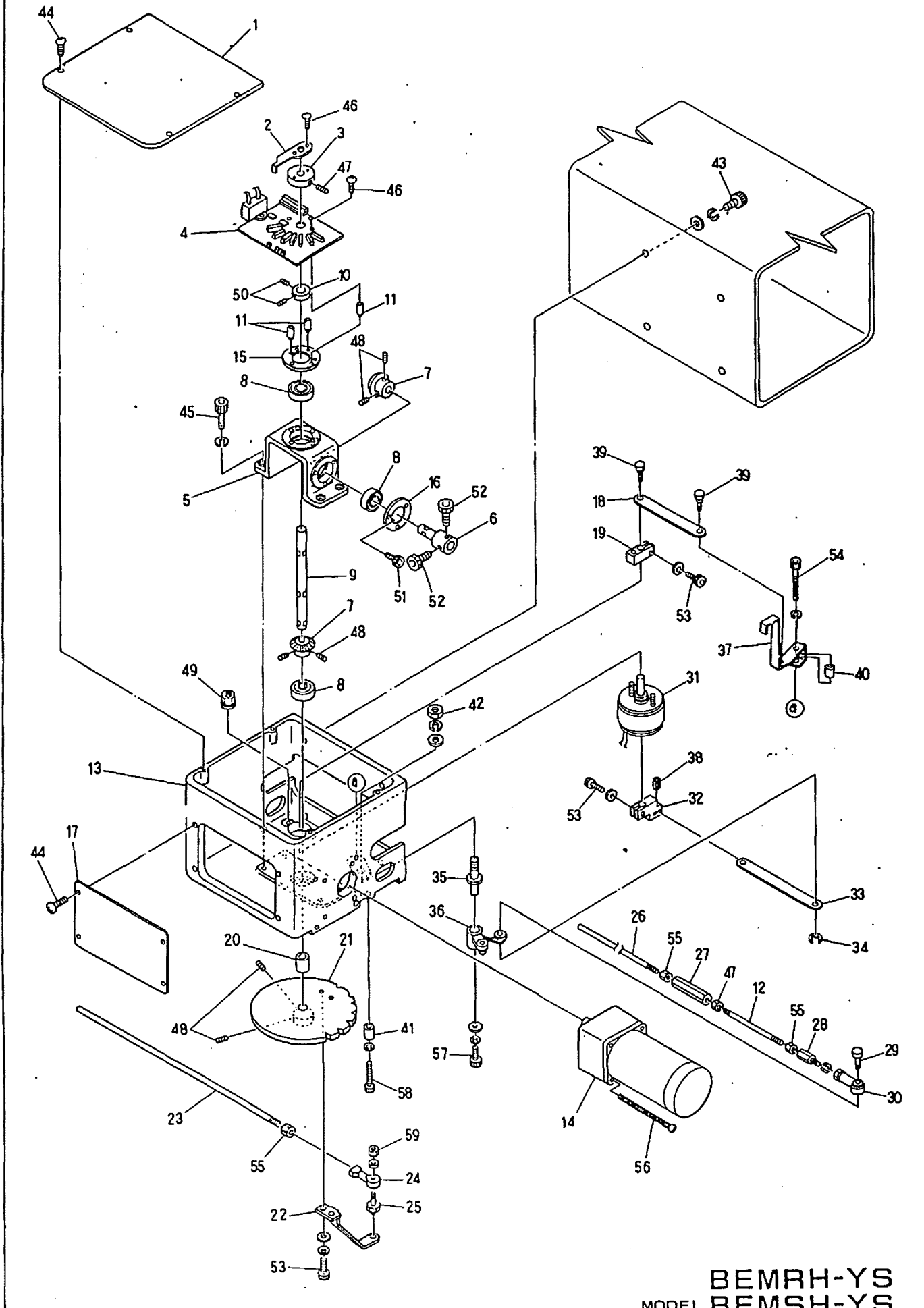
MODEL BEMRH-YS
BEMSH-YS
BEMXH-YS

⑥ Drive a'ssy

ITEM	LIST No.	DESCRIPTION	QTY	REMARK
1	HB310190	Handle cover	1	
2	HB310200	Handle PH10	1	
3	HB310210	Cover (Motor section)	1	
4	KN310000	Driving pully	1	
5	KN310010	Motor pully	1	
6	KN313670	Angle label (A)	1	
7	KN315110	Motor (IK-FBKB-4P-0.55KW VF3200V)	1	
8	KN310220	Motor base (R-05)	1	
9	HU315290	Key 6 × 6 × 32	1	
10	A9020203	Belt (4PK 1160)	1	
11	HB310020	Gear box (L)	1	
12	HB310040	Gear box cover (L)	1	
13	HB310170	Gear box (L) service cover	1	
14	HB310110	Bearing unit (Upper shaft)	1	
15	HB310070	Timing pully (8M-23)	2	
16	HB310050	Upper shaft (gear box(L))	1	
17	HP310280	Key 6 × 6 × 48	1	
18	A9020131	Timing belt (250S8M76)	1	
19	HB310100	Idler pully bracket	1	
20	HP310150	Idler shaft	1	
21	HB310080	Idler pully φ65	1	
22	A9012068	C-Ring φ15	1	
23	HB310150	Angle gauge	1	
24	HB310120	Bearing unit (Lower shaft)	1	
25	HB310130	Shim	1	for small bobbin
26	A9011040	Bearing (RB-204)	3	
27	HB310220	Key 6 × 6 × 83	1	
28	HB310060	Lower shaft (Gear box L)	1	
29	HB310160	Gear box cover (front)	1	
30	A9011035	Bearing unit (UCFL204)	1	
31	HH320550	Upper shaft connecting coupling	1	
32	KC320820	Connecting shaft φ15	2	
33	HB310140	Housing (Lower shaft)	1	
34	HP321100	Lower shaft connecting coupling	1	
35	HB130020	Bride fixing spacer T=1	1	
	HB130030	Bride fixing spacer T=0.5	1	
36		Truss screw M1×6	1	
37		Hex. socket set screw M5×10	1	
38	A9012166	Knob bolt KT-B M5×10	1	
39		Hex. socket bolt M19×15		
40		Hex. socket set screw M6×6		
41		Hex. socket bolt M6×15		Key side
		Hex. socket bolt M6×20		
42		Hex. socket bolt M6×20		
43		Hex. socket bolt M12×10		

Barudan

⑦ Color change mechanism



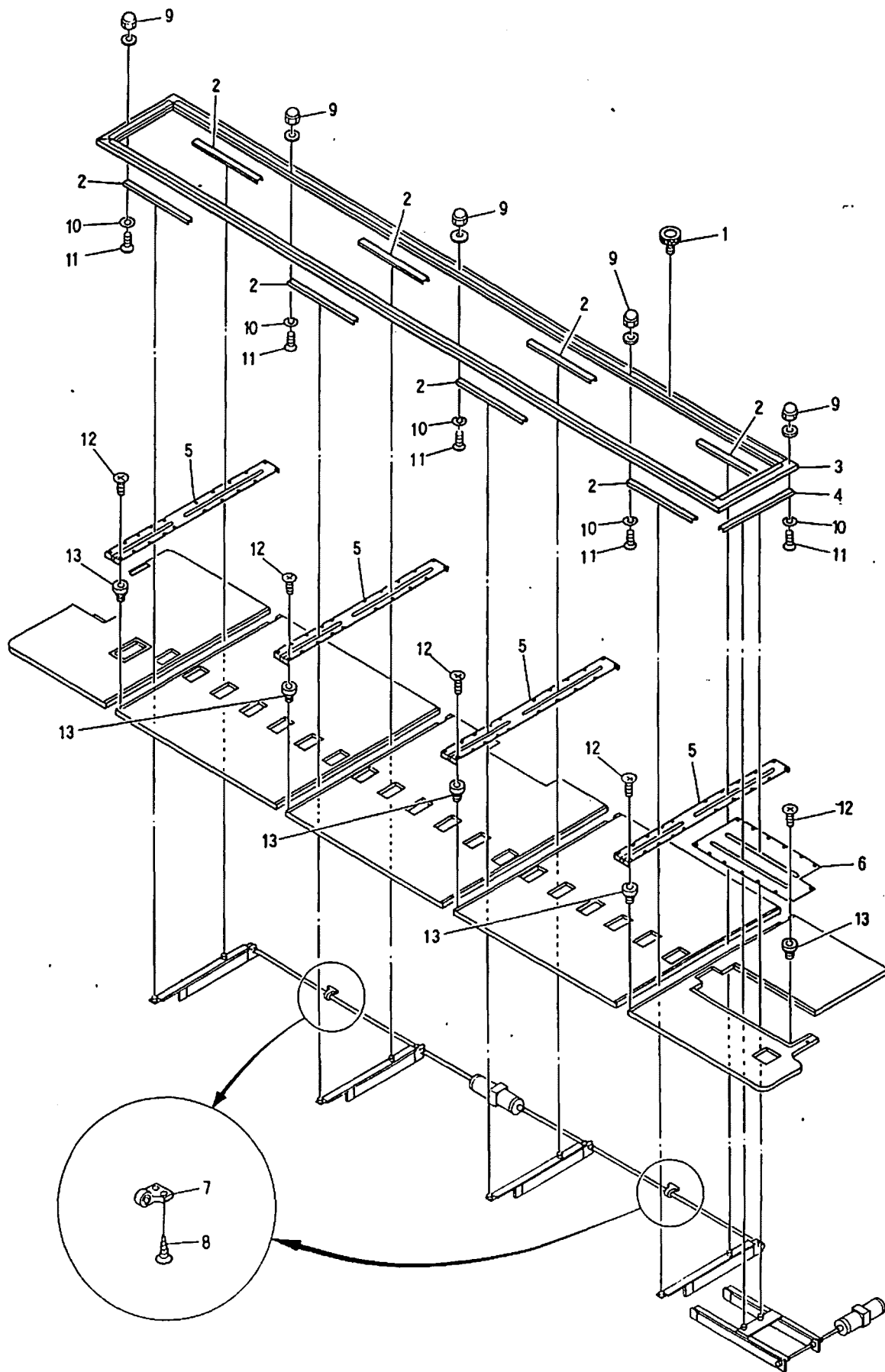
MODEL
BEMRH-YS
BEMSH-YS
BEMXH-YS

⑦ Color change mechanism

ITEM	LIST No.	DESCRIPTION	QTY	REMARK
1	HB330140	Color change box upper cover	1	
2	KC330280	Color change confirmation lever	1	
3	KC330170	Sensorlum plate collar	1	
4	EBY00180	3740 Color change board	1	
5	HB330020	Color change board base	1	
6	HB330170	Geard motor shaft (6RH)	1	
7	HB330130	Miler bevel gear	2	
8	A9010001	Bearing (6000ZZ)	3	
9	HB330110	Needle turning shaft	1	
10	HB330221	Set collar	1	
11	HB330211	Spacer	3	
12	KC330420	Lock connecting rod	1	
13	HB330010	Color change box	1	
14	HH330810	Geard motor shaft	1	
15	HB330200	Bearing fixing (2')	1	
16	HB330190	Bearing fixing (1')	1	
17	HB330150	Color change box front cover	1	
18	HB330090	Lock confirmation lever (Drive plate)	1	
19	HB330070	Lock confirmation lever (Drive lever)	1	
20	HB330120	Positing collar	1	
21	HB330030	Color change plate	1	
22	HB330040	Color change plate lever	1	
23	KC330310300	Turret plate connecting rod L=250	1	
24	A9012001	Uniball joint (RD4020R)	1	
25	HP331660	Joint pin	1	
26	KC330410	Lock connecting rod	2	
27	HH330770	Hex. connecting bar	1	
28	HP331610	Hex. connecting bar	1	
29	HP331560	Lok lever pin	1	
30	A9012002	Uniball joint (PR-6)	1	
31	A9056011	Rotary solenoid (6SR25-27×3.4.9)	1	
32	HB330060	Lock solenoid lever	1	
33	HB330080	Link lock lever	1	
34	A9012055	E-Ring φ4	1	
35	KF230630	Lock lever shaft	1	
36	HB330050	Color change lock lever	1	
37	HB330101	Lock confirmation lever	1	
38	A9012143	Spring pin φ6×12	1	
39	HP331700	Lock confirmation lever pin	2	
40	HP331950	Lock confirmation roller	1	
41	HH330670	Eccentric stopper	1	
42		Hex. nut M8		
43		Hex. socket bolt M8×25		
44		Truss screw M4×10		
45		Hex. socket bolt M8×12		

Barudan

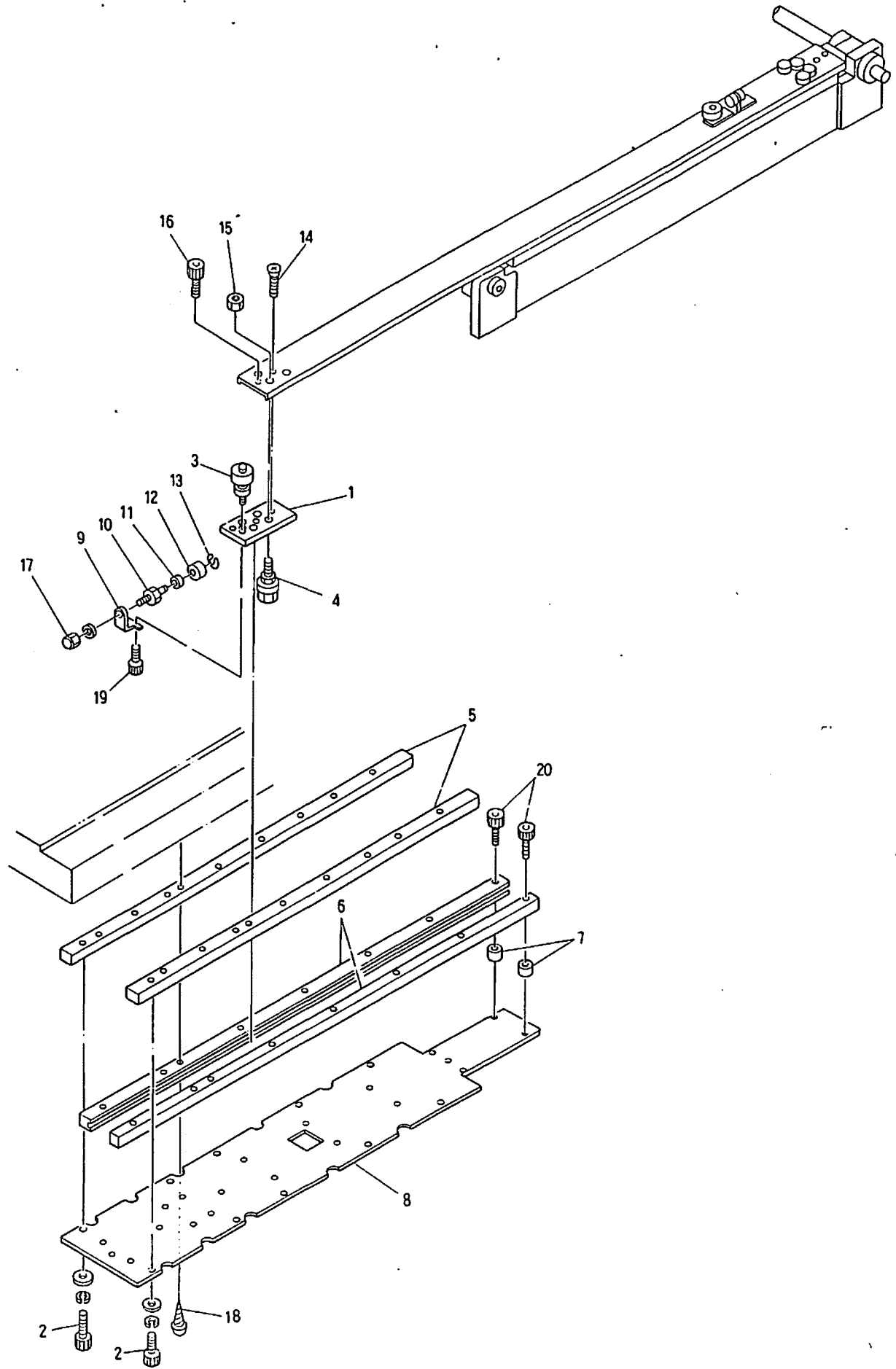
⑧ Pantograph drive mechanism I (V·H-Direction)



MODEL
BEMRH-YS
BEMSH-YS
BEMXH-YS

Barudan

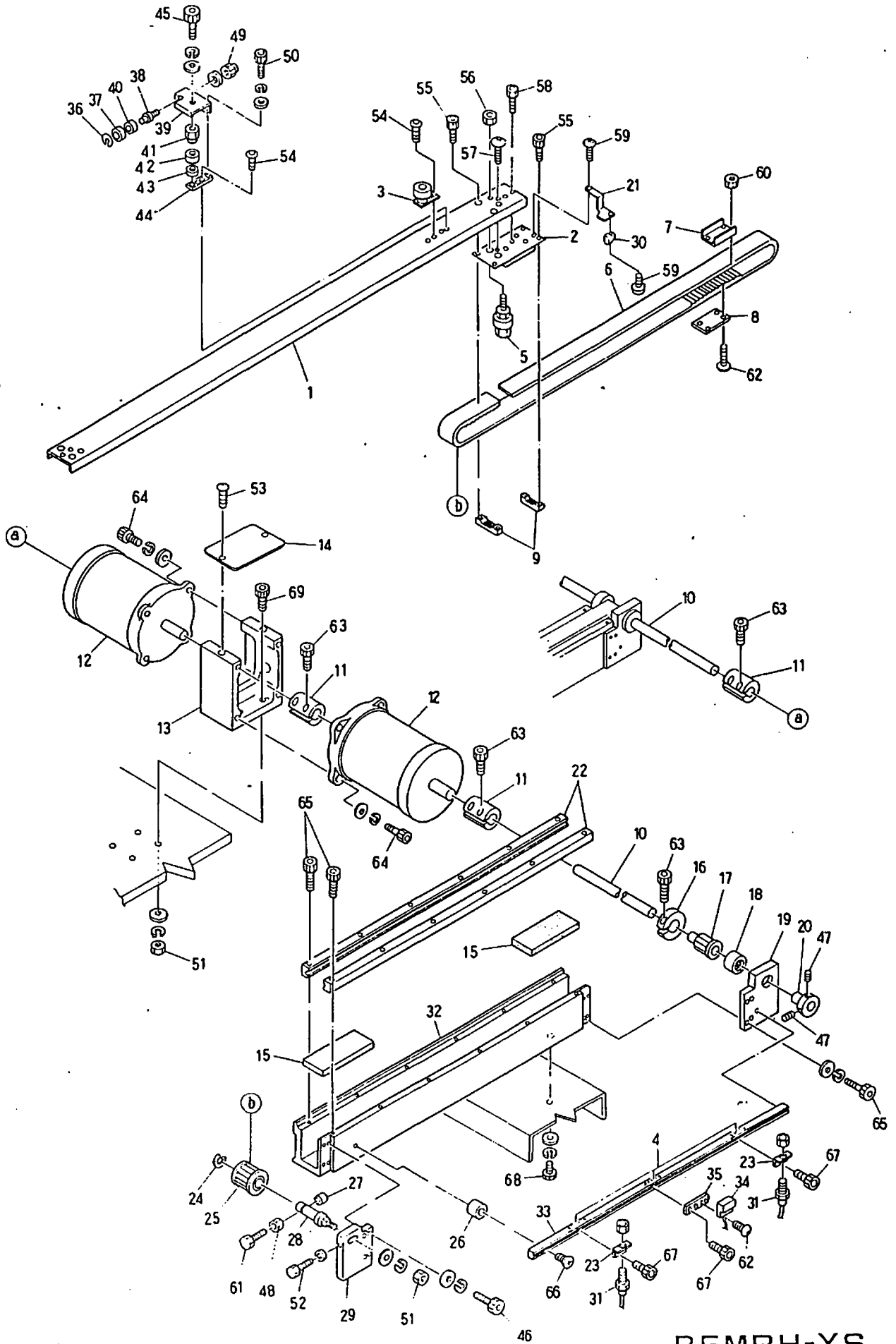
⑨ Pantograph drive mechanism II (H-Direction)



MODEL BEMRH-YS
BEMSH-YS
BEMXH-YS

Barudan

⑩ Pantograph drive mechanism III (H-Direction)

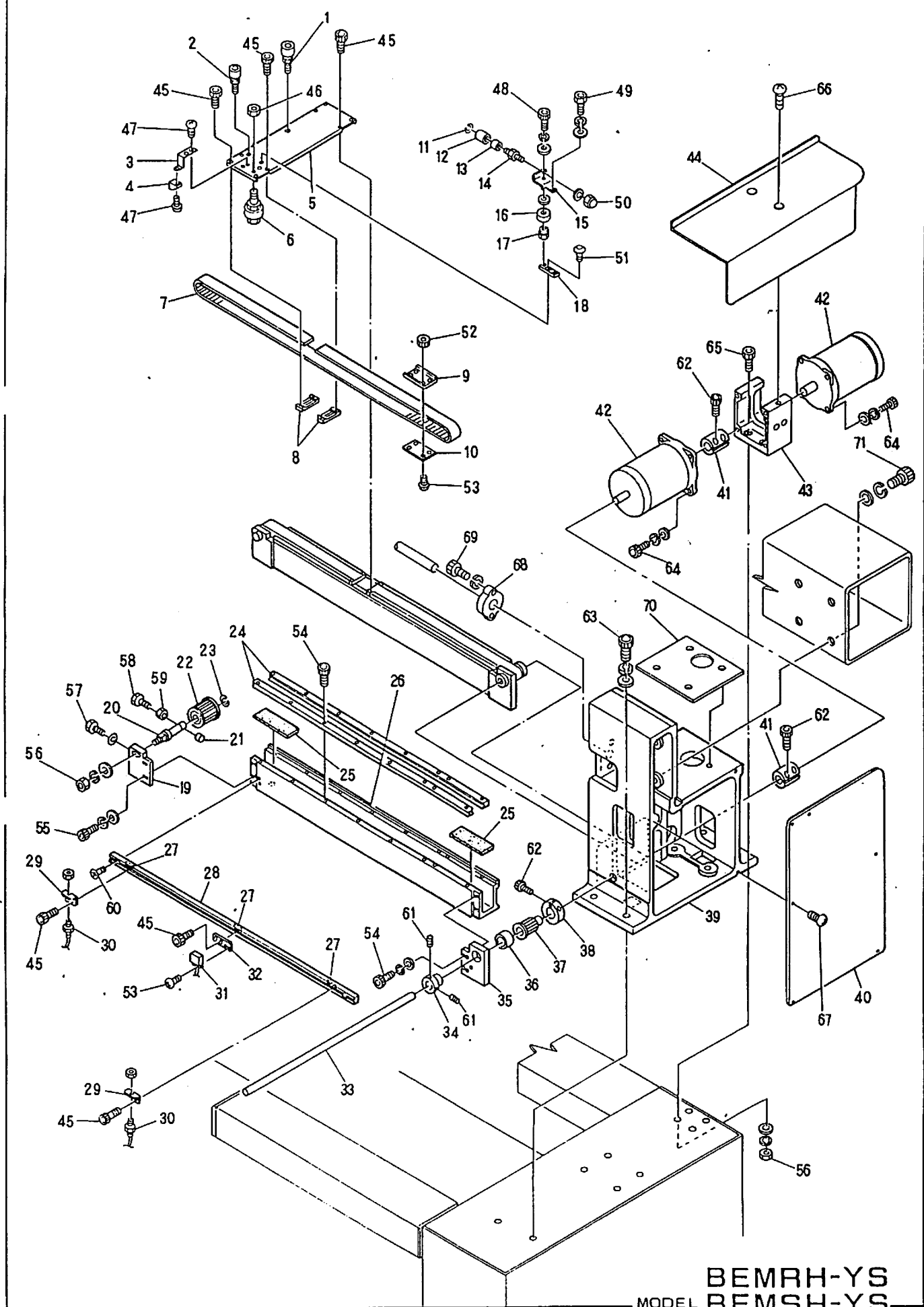


MODEL BEMRH-YS
BEMSH-YS
BEMXH-YS

⑩ Pantograph drive mechanism III (H-Direction)

(※Change the LIST No. by machine type)

ITEM	LIST No	DESCRIPTION	Q'TY	REMARK
1	HP48313G45	H-member connections channel (H450)	1	※
2	HP482871	H-roller base (Rear)	1	
3	HP483391	Slide bearing pin a'ssy -H-	1	
4	KU460270	Plate nut (M3)	3	
5	HP482950	Roller pin a'ssy A	4	
6	A9020098	Timing belt (300S5M2000)	1	
7	HH482031	Belt connecting plate No1	1	
8	HH482041	Belt connecting plate No2	1	
9	HP482940	Timing belt rack (5M)	2	
10		H-Pulse motor coupling shaft	1	
11	HH481931	Pulse motor coupling	3	
12	HH481900	Pulse motor 4M	2	
13	HH481911	H-Pulse motor bracket	1	
14	HH481940	Pulse motor bracket cover	1	
15	KN480061	Rail base felt (100×38×6)	2	
16	HH481980	Clamping φ19	1	
17	HP482990	Pantograph driving pulley (Rear) S5M	1	
18	A9011063	Needle bearing (TLA2016)	1	
19	HH482010	H-guide rear pulley bracket	1	
20	HH481970	Pulse motor connecting shaft collar	1	
21	HP451080	Magnet bracket	1	
22	HP482910	V-guide rail (L=1060)	2	
23	MT460240	RS-001 Bracket	2	
24	A9012052	E-Ring	1	
25	HP482980	Pantograph driving pulley (Front) S5M	1	
26	A9012219	Spacer 8×7	1	
27	HH482110	Pulley shaft bolt cap	1	
28	HH481991	Timing pulley shaft	1	
29	HH482000	H-guide front pulley bracket	1	
30	A9052030	Magnet (M-102A-02)	1	
31	A9052024	Switch (RS-001)	2	
32	HH48209G45	H-guide rail base (strok 450)	1	
33	HP45111G45	H-origin rail (strok 450)	1	
34	A9052031	Magnet proximity switch (MH-601A)	1	
35	KN450300	Proximity switch (MH-601A) fixing bracket	1	
36	A9012127	E-Ring φ3	1	
37	HP460160	Pantograph stop collar	1	
38	HP460170	Pantograph stop pin	1	
39	HP482250	H-Auxiliary roller fixing bracket	1	
40	A9012126	KB bush (KBB-0406 D)	1	
41	HP482270	H-Auxiliary roller adjusting collar	1	
42	HP482590	H-Auxiliary roller	1	
43	HP482260	H-Auxiliary roller fixing collar	1	
44	HP482280	H-Auxiliary roller fixing base	1	
45		Hex. socket bolt M5×30		



BEMRH-YS
MODEL BEMSH-YS
BEMXH-YS

Copper 211 Cu

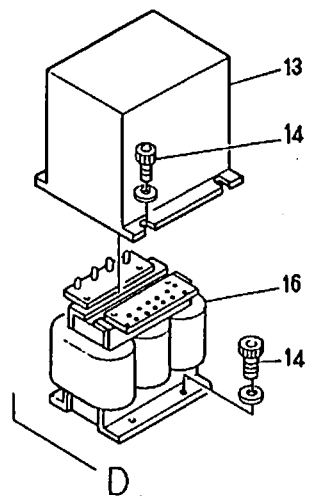
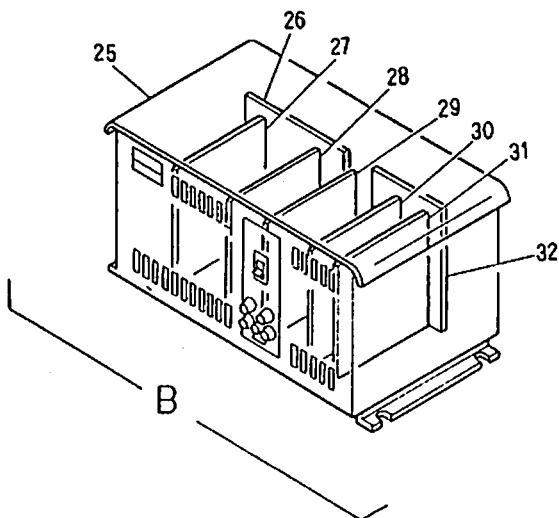
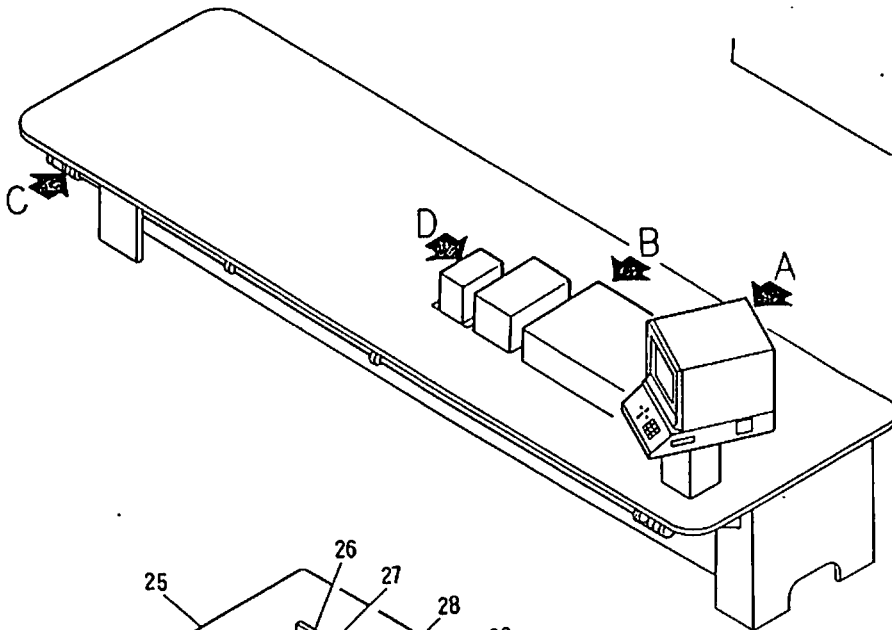
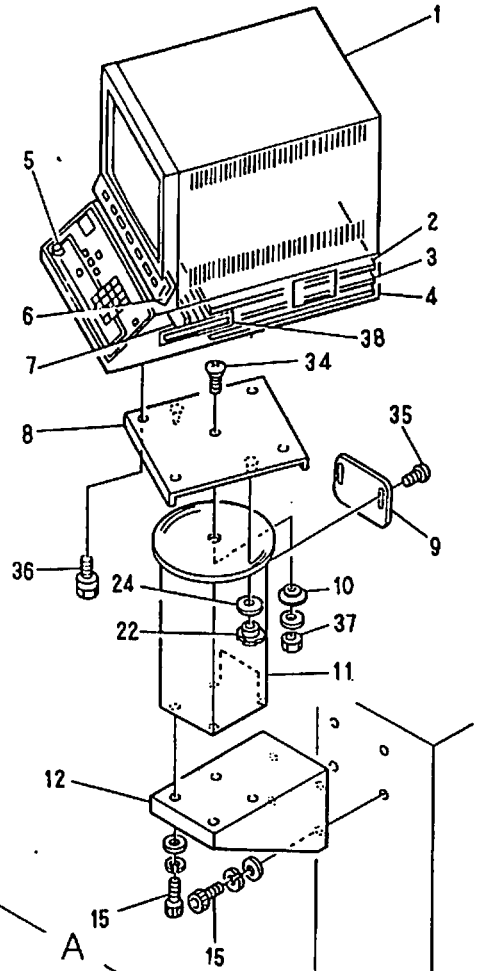
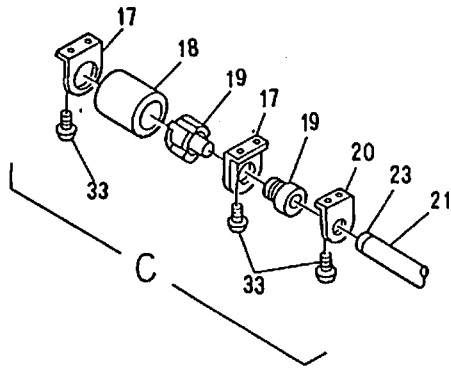
1) Pantograph drive mechanism IV(V-Direction)

(*Change the LIST No by machine type)

ITEM	LIST No	DESCRIPTION	Q'TY	REMARK
1	HP 4 5 3 1 1 1	Slide bearing pin a'ssy (B)	1	
2	HP 4 5 3 3 7 0	Slide bearing pin a'ssy	1	
3	HP 4 5 1 1 0 0	V-Origin magnet bracket	1	
4	A 9 0 5 2 0 3 0	Magnet (M-102A-02)	1	
5	HP 4 5 2 8 9 2	V-Roller base (3)	1	
6	HP 4 5 2 9 5 0	Roller pin a'ssy A	8	
7	A 9 0 2 0 0 9 8	Timing belt (300S5M2000)	2	
8	HP 4 8 2 9 4 0	Timing belt rack (5M)	4	
9	HH 4 3 2 0 3 1	Belt connecting plate No1	2	
10	HH 4 3 2 0 4 1	Belt connecting plate No2	2	
11	A 9 0 1 2 1 2 7	E-Ring φ3	1	
12	HP 4 5 0 1 6 0	Pantograph stop pin	1	
13	A 9 0 1 2 1 2 6	KB bush (XBB-0406-D)	1	
14	HP 4 5 0 1 7 0	Pantograph stop pin	1	
15	HP 4 3 2 5 8 0	V-Auxiliary roller fixing bracket	1	
16	HP 4 3 2 2 9 0	V-Auxiliary roller (23-2280)	1	
17	HP 4 3 2 5 6 0	V-Auxiliary roller adjusting collar	1	
18	HP 4 8 2 5 7 0	V-Auxiliary roller fixing base	1	
19	HH 4 8 2 0 0 0	H-Guide front pulley bracket	2	
20	HH 4 8 1 9 9 1	Timing pulley shaft	2	
21	HH 4 8 2 1 1 0	Pulley shaft bolt cap	2	
22	HP 4 8 2 9 8 0	Pantograph driving pulley (Front) S5M	2	
23	A 9 0 1 2 0 5 2	E-Ring φ10	2	
24	HP 4 8 2 9 1 0	V-Guide rail (L=1050)	4	
25	KN 4 8 0 0 6 1	Rail base felt (100×38×6)	4	
26	HP 4 8 2 1 7 0 5 3 0	V-Guide rail base (strok 530)	2	*
27	KU 4 6 0 2 7 0	Plate nut (M3)	3	
28	HP 4 5 1 1 2 0 5 3 0	V-Origin rail (V530)	1	*
29	MT 4 5 0 2 4 0	RS-001 bracket (V)	2	
30	A 9 0 5 2 0 2 4	Switch (RS-001)	2	
31	A 9 0 5 2 0 3 1	Magnet proximity switch (MH-601A)	1	
32	KN 4 5 0 3 0 0	Proximity switch (MH-601A) fixing bracket	1	
33	HB 4 9 0 0 1 0	V-Pulse motor coupling shaft (YS)	1	
34	HH 4 8 1 9 7 0	Pulse motor coupling shaft collar	2	
35	HH 4 8 2 0 1 0	H-Guide rear pulley bracket	2	
36	A 9 0 1 1 0 6 3	Needle bearing (TLA2016)	2	
37	HP 4 5 2 9 9 0	Pantograph driving pulley (Rear) S5M	2	
38	HH 4 8 1 9 8 0	Clamping φ19	2	
39	HB 3 1 0 0 1 0	Gear box R	1	
40	HB 3 1 0 0 3 0	Gear box cover	1	
41	HH 4 8 1 9 3 1	Pulse motor coupling	2	
42	HH 4 8 1 9 0 0	Pulse motor 4W	2	
43	HH 4 8 1 9 1 1	H-Pulse motor bracket	1	
44	HB 3 1 0 2 3 0	Cover Table R Rear	1	
45		Hex. socket bolt M3		

Barudan

⑫ Control system <BEMRH-YS>



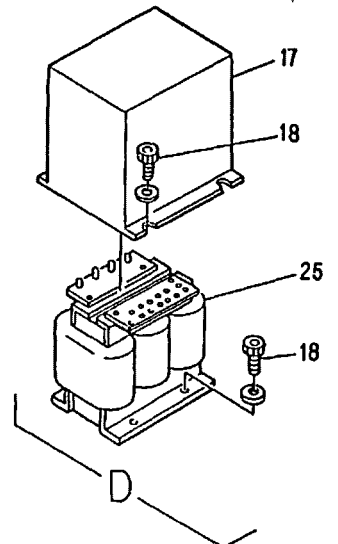
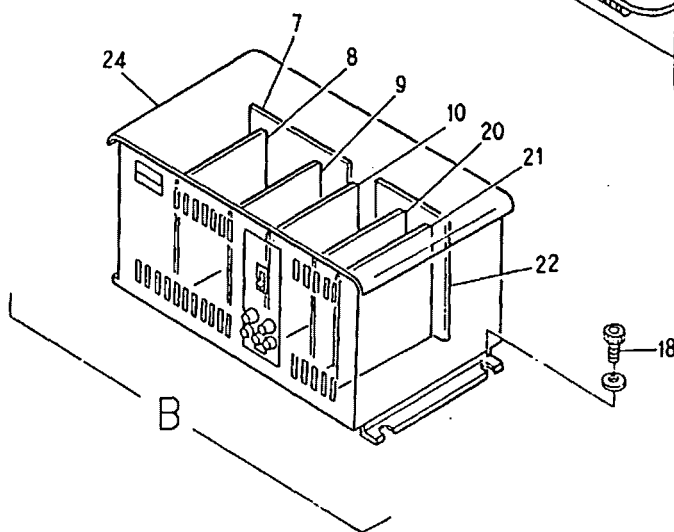
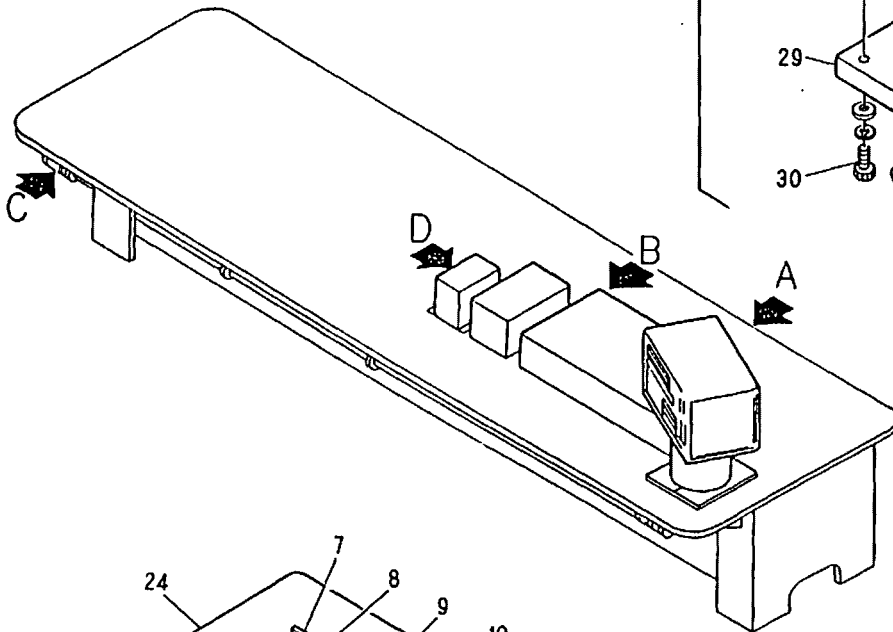
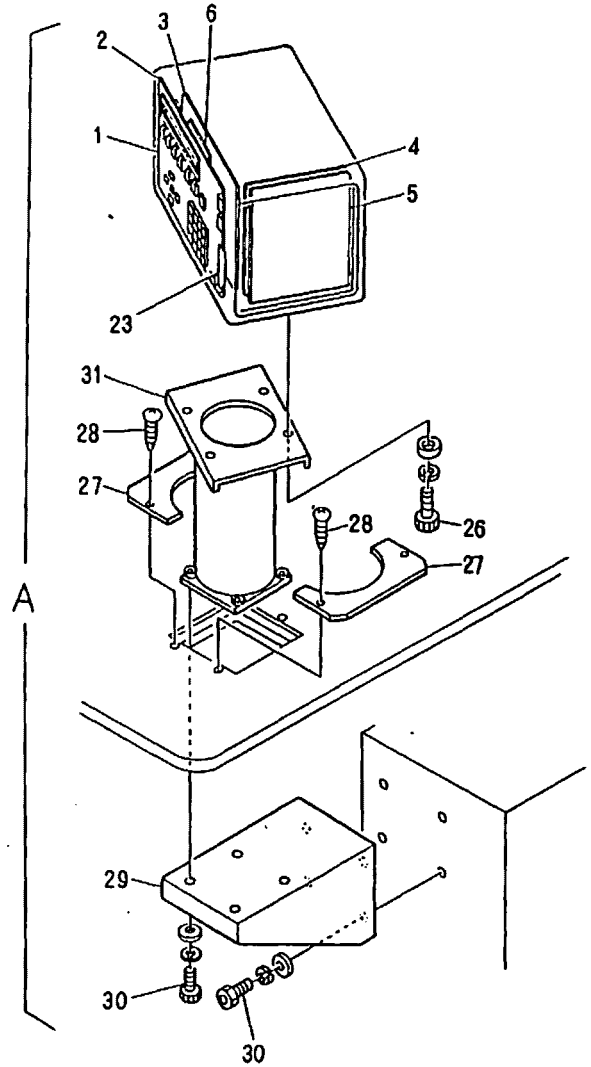
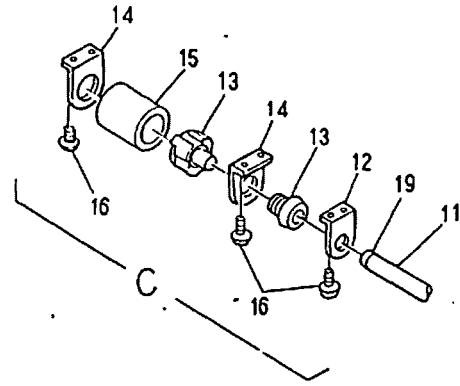
MODEL BEMRH-YS
BEMSH-YS
BEMXH-YS

⑫ Control system <BEMRH-YS>

ITEM	LIST No.	DESCRIPTION	QTY	REMARK
1	EAY017A1	Automat controller (BEMR)	1	
2	EBY00450	4410 CPU board	1	
3	EBY00460	4420 Memory board	1	
4	EBY00470	4430 FDSP board	1	
5	EBY00490	4450 Buzzer board	1	
6	EBY00500	4460 Switch board	1	
7	EBY00480	4440 B/B board	1	
8	HP512350	Controller rotary base	1	
9	HP512340	Controller stand rear cover	1	
10	HP512330	Controller rotary shaft	1	
11	HP512310	Controller stand	1	
12	HP512320	Controller stand fixing stay	1	
13	KC520020	Transformer cover set	1	
14		Hex. socket bolt M6×30		
15		Hex. socket bolt M8×20		
16	EAY018A3	Automat transformer 1P (BEMR)	1	
	EAY017A3	Automat transformer 3P (BEMR)	1	
17	KC530230	Bar switch bracket (L)	4	
18	KF530150	Push button switch cap	2	
19	KF530111	Push button switch MS319 (Red)	1	
	KF530120	Push button switch MS319 (Green)	1	
20	KC530240	Bar switch bracket (S)	5	
21	KF530160	Bar switch	1	
22		Knob nut M6		
23	KF530170	Bar switch cap	2	
24		Washer 6		
25	EAY017A2	Automat driver (BEMR)	1	
26	EBY00570	4590 B/B·L board	1	
27	EBY00540	4540 Pulse motor controller board	1	
28	EBY00530	4530 Inverter board	1	
29	EBY00550	4560 Power control board	1	
30	EBY00520	4520 Solenoid board	1	
31	EBY00510	4510 Inter face board	1	
32	EBY00560	4580 B/B·R board	1	
33		Pan lapping screw M4×20		
34		Flush screw M5×20		
35		Truss screw M4×10		
36		Hex. socket bolt with spring washer M6×12		
37		Hex. nut M8		
38	EBY00630	Floppy disk drive FD-1137C	1	

Barudan

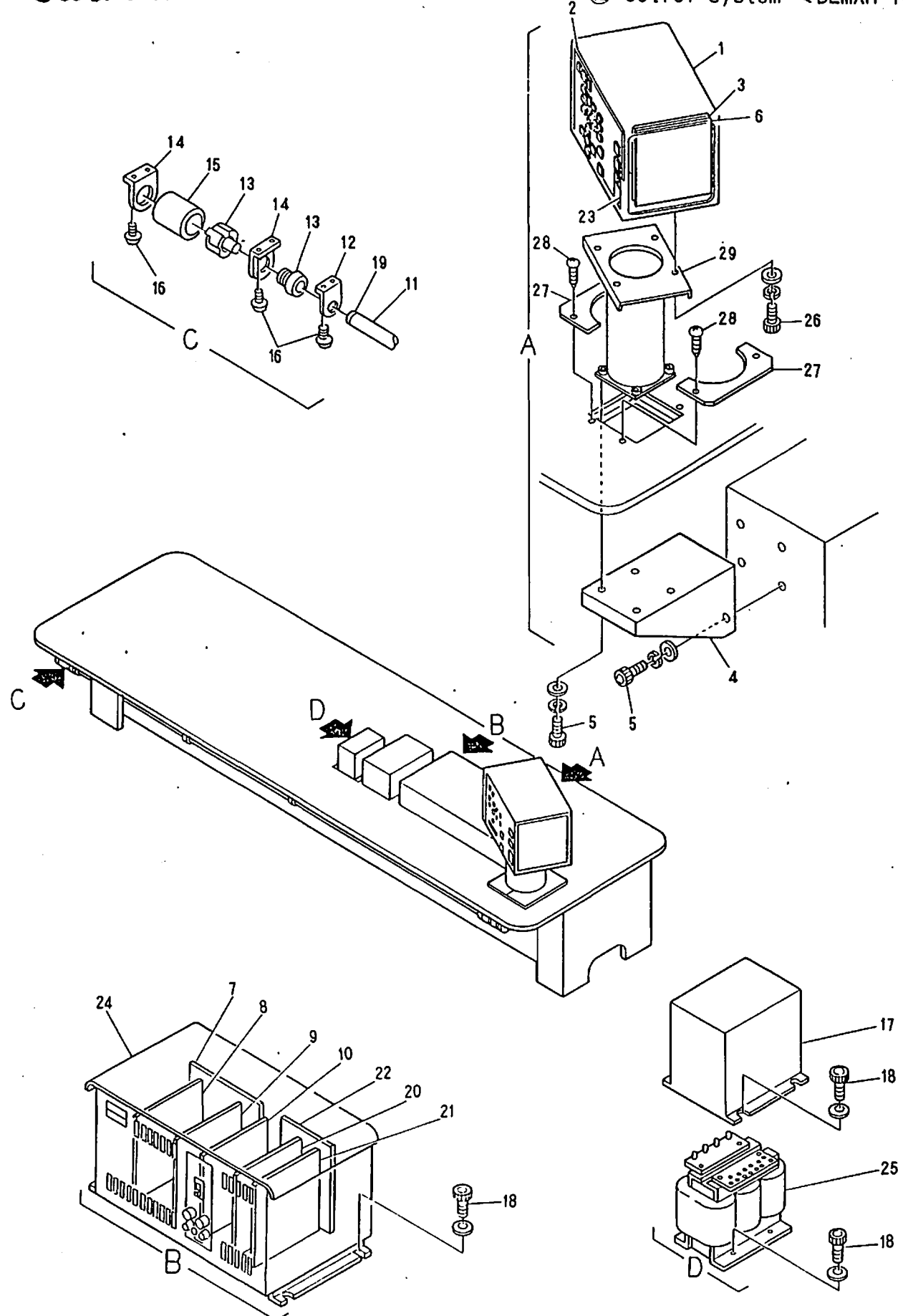
⑫ Control system <BEMSH-YS>



MODEL BEMRH-YS
BEMSH-YS
BEMXH-YS

Barudan

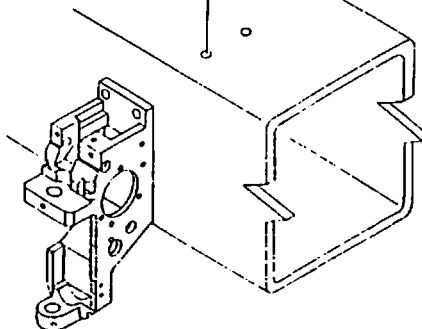
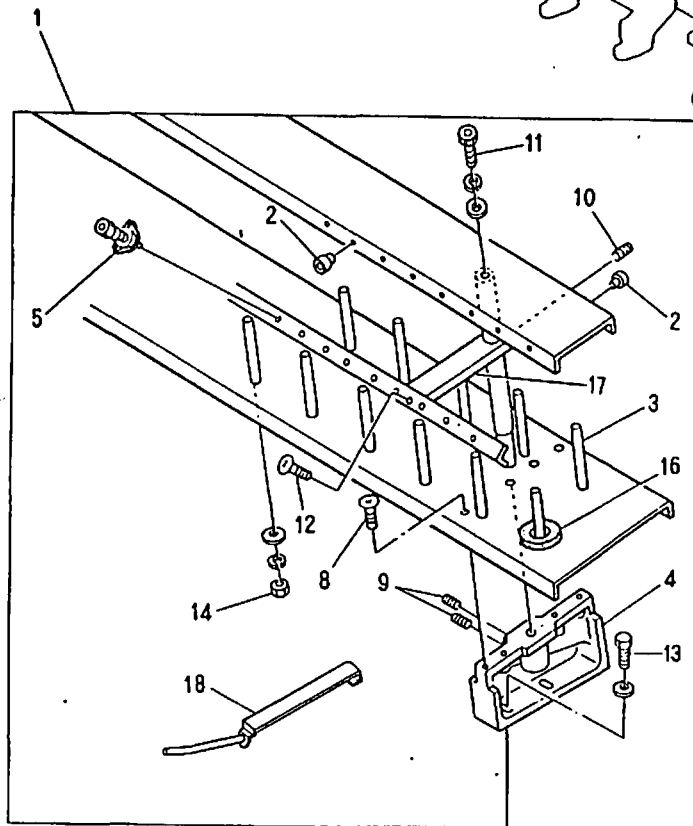
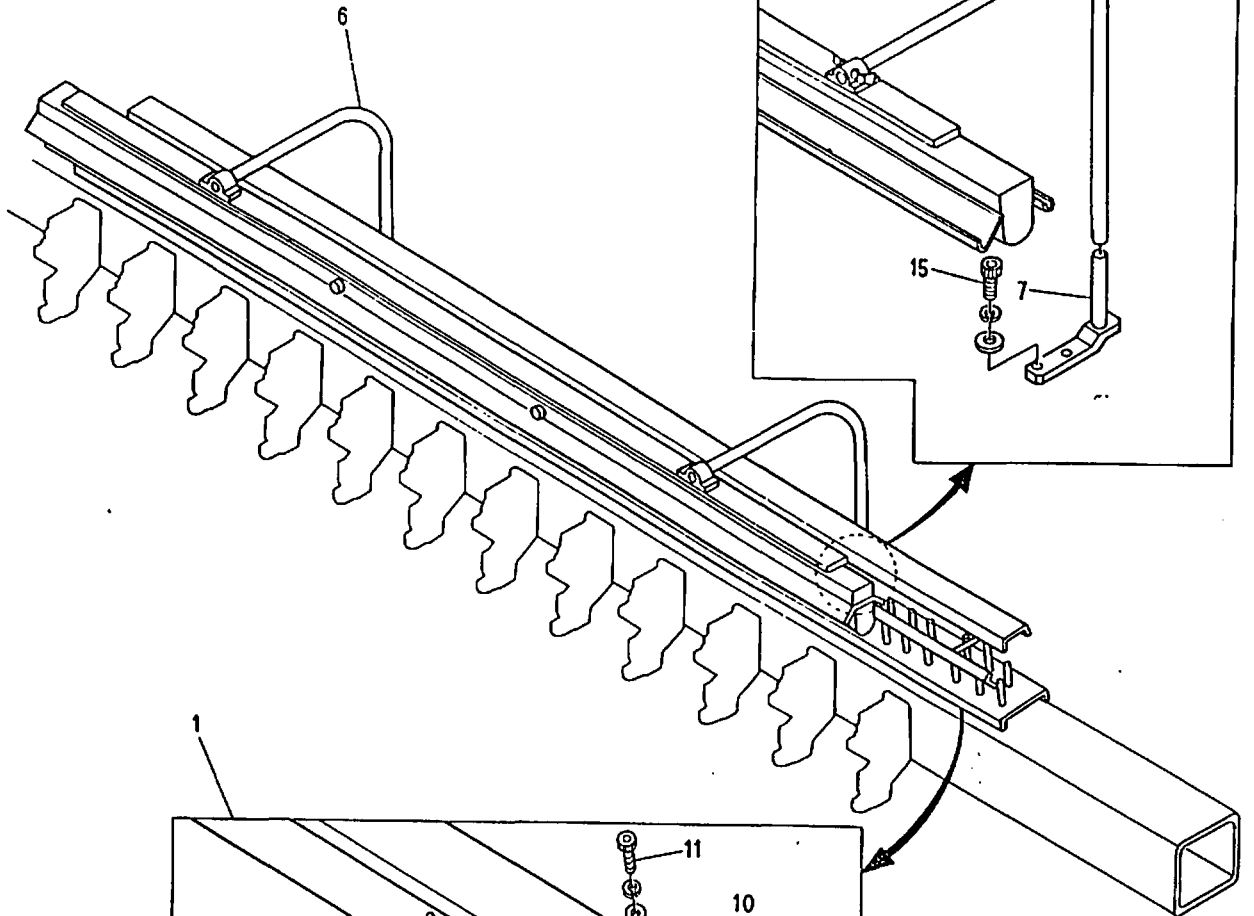
⑫ Control system <BEMXH-YS>



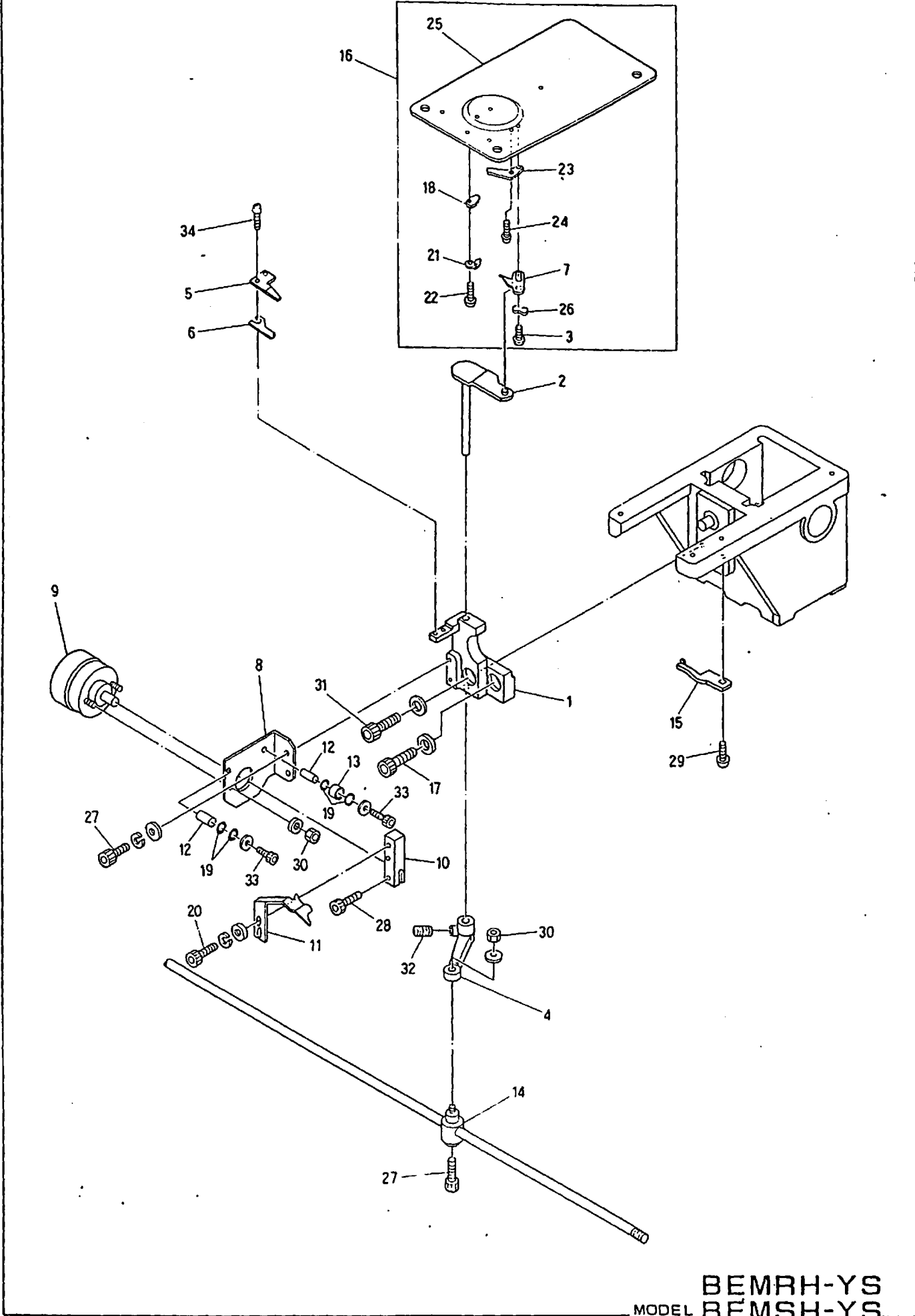
MODEL BEMRH-YS
BEMSH-YS
BEMXH-YS

Barudan

(13) Option



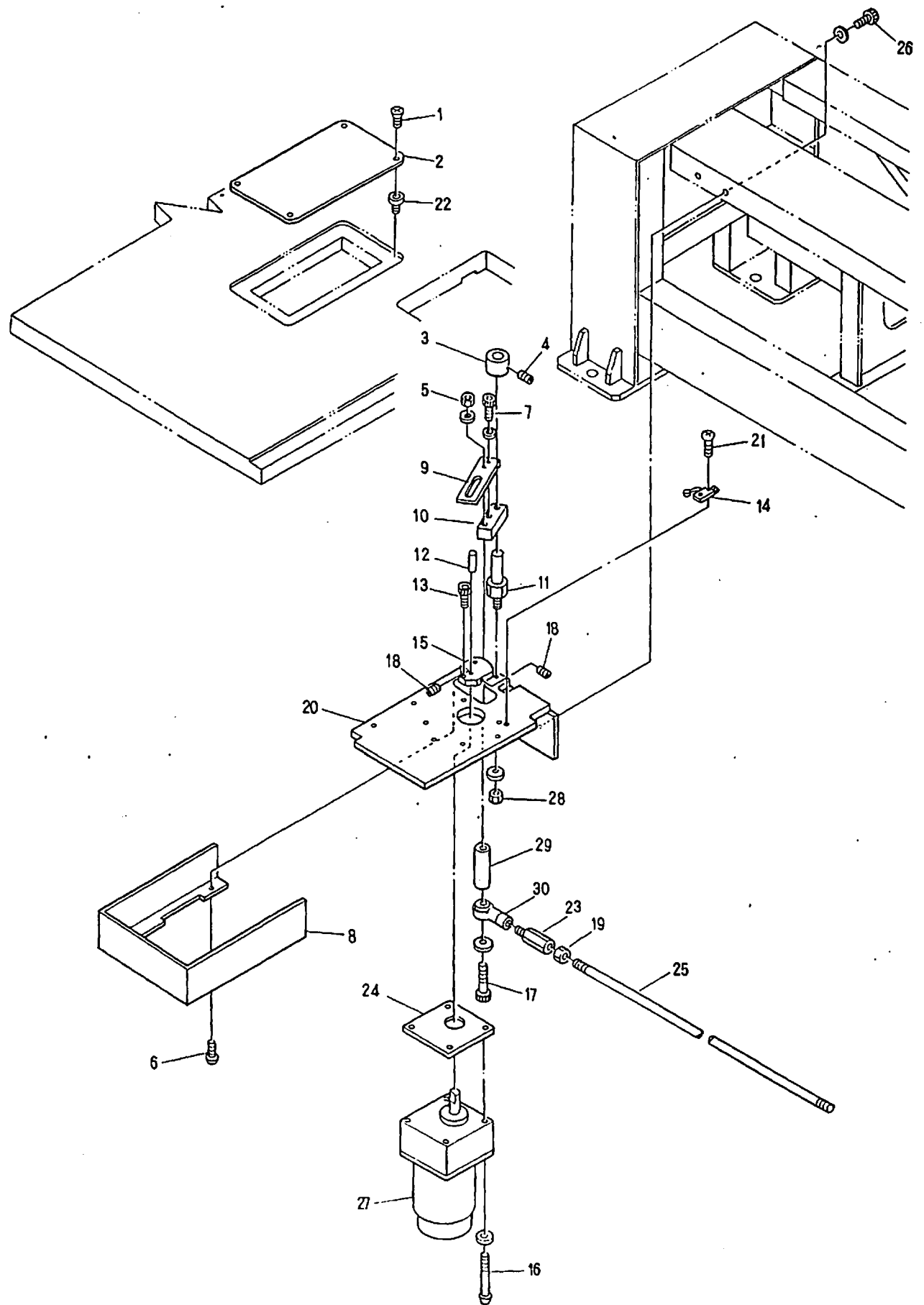
MODEL BEMRH-YS
BEMSH-YS
BEMXH-YS



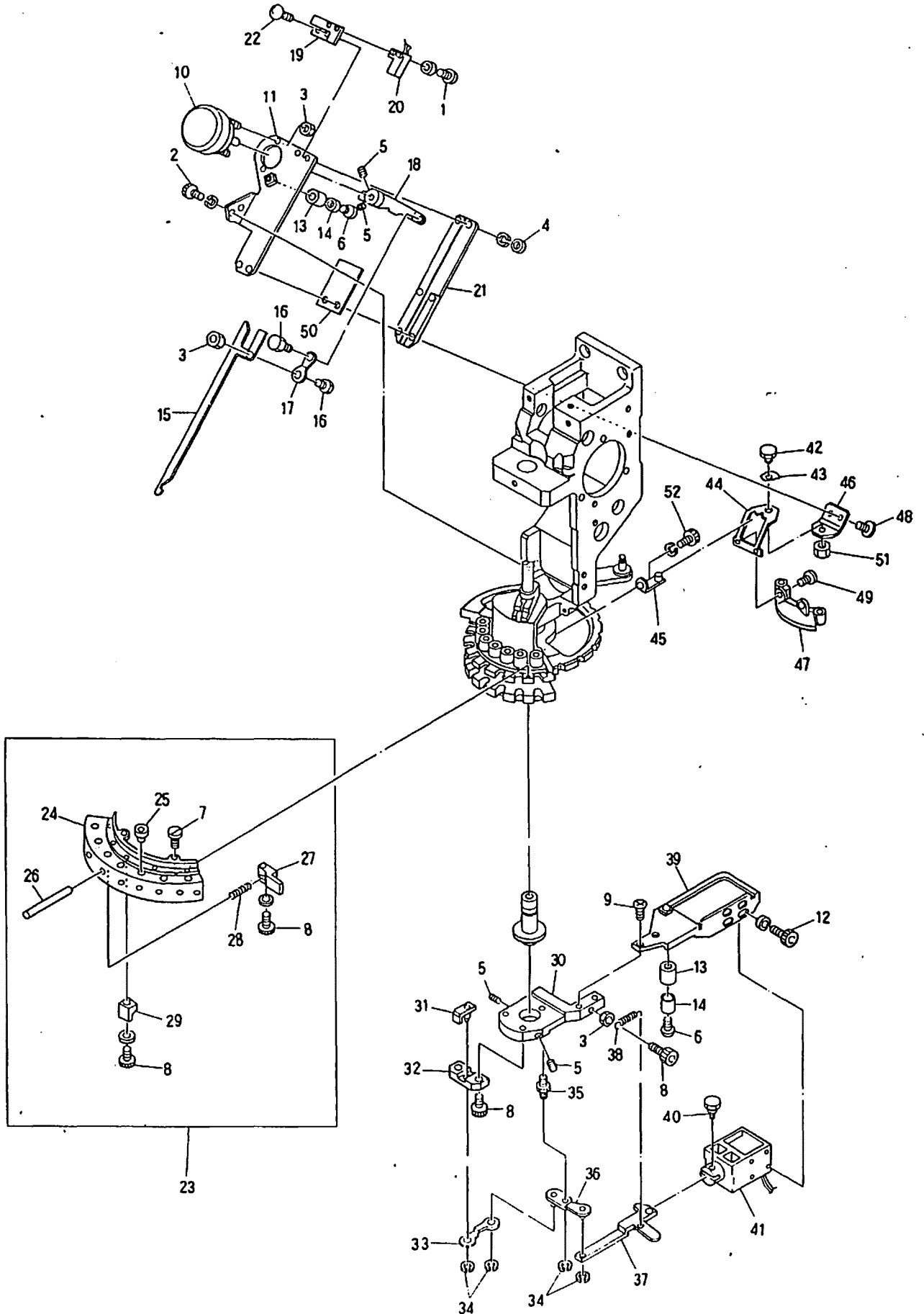
MODEL BEMRH-YS
BEMSH-YS
BEMXH-YS

Barudan

15 Thread cutting drive mechanism II



MODEL BEMRH-YS
BEMSH-YS
BEMXH-YS



MODEL BEMRH-YS
BEMSH-YS
BEMXH-YS

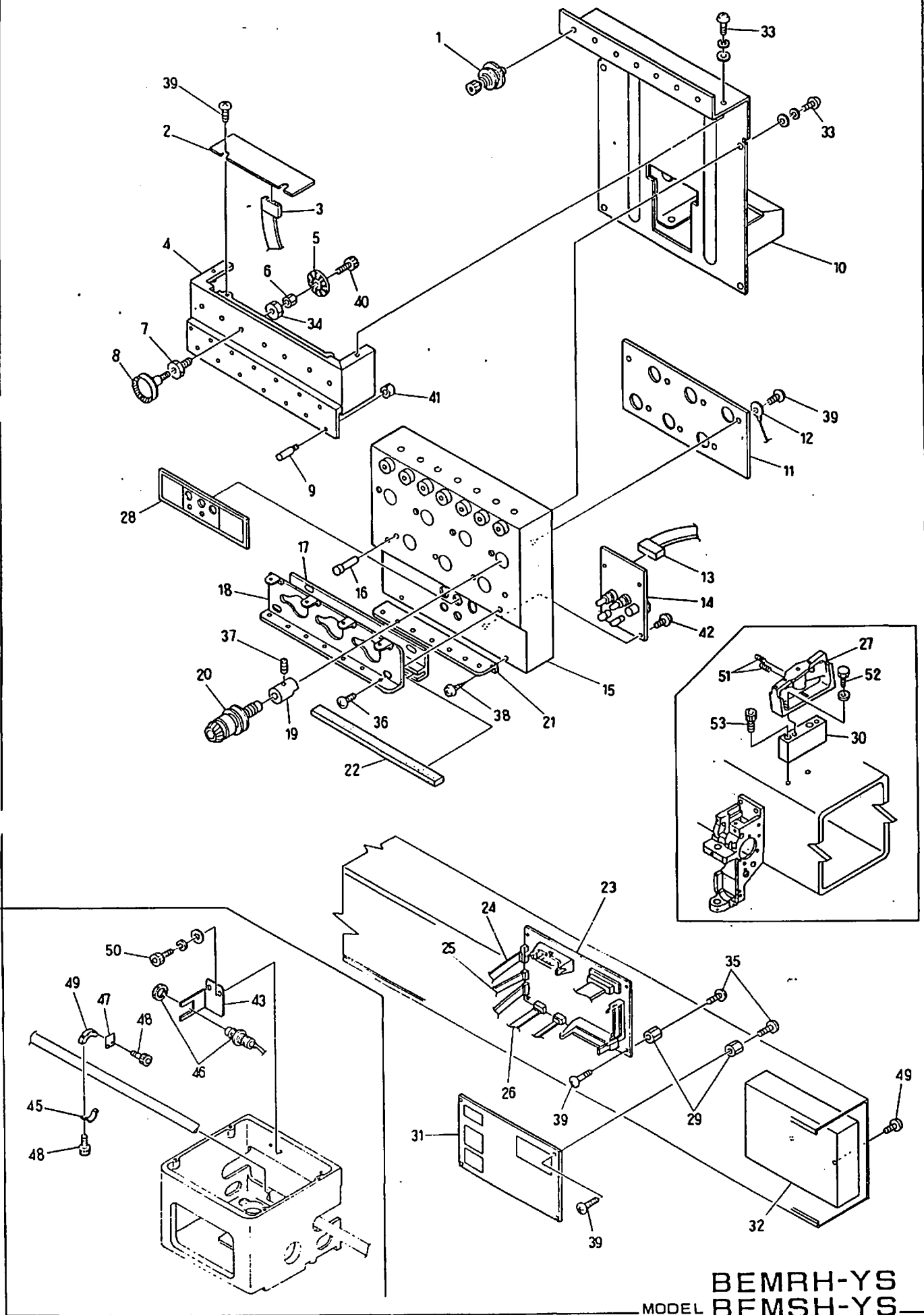
⑩ Thread cutting mechanism III

(N=Needle Q'ty)

ITEM	LIST No	DESCRIPTION	Q'TY	REMARK
1		Truss screw M3×6		
2		Hex. socket bolt M4×12		
3		Hex. nut M4		
4		Hex. nut M3		
5		Hex. socket set screw M4×8		
6		Truss screw M4×16		
7		Screw (SM9/64 40)		
8		Hex. socket bolt M4×10		
9		Flush screw M4×8		
10	A 9 0 5 6 0 1 8	Rotary solenoid (4ER67.5-34×8×9)	1	
11	KL 2 7 0 0 8 1	Thread support base	1	
12		Hex. socket bolt M3×6		
13	KL 2 7 0 1 5 0	Eccentric cover	2	
14	KL 2 7 0 1 4 0	Eccentric stopper	2	
15	KL 2 7 0 1 0 1	Thread support hook	1	
16	KL 2 7 0 1 3 0	lever connecting pin	2	
17	KL 2 7 0 1 2 0	Connecting plate	1	
18	KL 2 7 0 1 1 0	Thread support solenoid lever	1	
19	KL 2 7 0 2 6 0	Switch stay	1	
20	A 9 0 5 2 0 2 8	Proximity switch (RS-603)	1	
21	KL 2 7 0 0 9 1	Thread support hook guide	1	
22		Truss screw M3×10		
23	KC 2 7 0 7 6 1	Thread support apron UF a'ssy (5)	1	
	KG 2 7 0 7 6 0	Thread support apron UG a'ssy (7)	1	
24	KG 2 7 0 2 8 3	Thread support apron (5)	1	
	KC 2 7 0 2 8 2	Thread support apron (7)	1	
25	KF 2 3 0 5 8 0	Take up lever ceramic	N×1	
26	KG 2 7 0 3 1 0	Thread support shaft	N×1	
27	KC 2 7 0 3 0 1	Thread support clamp	N×1	
28	KC 2 7 0 2 7 1	Support spring	N×1	
29	KC 2 7 0 2 9 2	Thread support block	N×1	
30	KL 2 7 0 0 0 0	Fixing base	1	
31	KL 2 7 0 0 2 0	Thread support slider	1	
32	KL 2 7 0 0 1 0	Slide base	1	
33	KL 2 7 0 0 3 0	Driving plate	1	
34	A 9 0 1 2 0 5 6	E-Ring	4	
35	KL 2 7 0 0 4 0	Lever rotary shaft	1	
36	KL 2 7 0 0 5 0	Solenoid lever	1	
37	KL 2 7 0 0 6 0	Lever connecting plate	1	
38	KC 2 7 0 4 0 0	Thread support lever spring	1	
39	KL 2 7 0 0 7 0	Solenoid stay	1	
40	KC 2 7 0 1 0 1	Solenoid pin	1	
41	A 9 0 5 6 0 1 3	Keep solenoid (TDS-K10SL)	1	
42	KL 2 7 0 4 1 0	Thread hook disk rotary shaft	1	
43	A 9 0 1 3 0 4 5	Wave washer (WW-5)	1	

Barudan

⑰ Under thread cut sensorium mechanism



BEMRH-YS
MODEL BEMSH-YS
BEMXH-YS

① Under thread cut sensorium mechanism

(N=Needle)

ITEM	LIST No	DESCRIPTION	Q'TY	REMARK
1	KG 2 4 1 0 3 1	Upper tension unit complete	N×1	
2	KN 5 4 0 6 4 0	P.C board BAP-302-7 (7)	1	
	KN 5 4 0 6 3 0	P.C board BAP-302-5 (5)	1	
3	KN 5 4 0 7 1 0	Sensor cable 2	1	
4	KN 5 4 0 5 4 0	Lower thread sensorium box (7)	1	
	KN 5 4 0 5 3 0	Lower thread sensorium box (5)	1	
5	KN 5 4 0 5 2 0	Lower thread sensorium sensor disk	N×1	
6	KN 5 4 0 5 1 0	Tension wheel nut M2	N×1	
7	KN 5 4 0 6 1 0	Wheel shaft metal	N×1	
8	KN 5 4 0 5 0 0	Tension wheel shaft a'ssy	N×1	
9	KN 5 4 0 5 9 0	Thread guide pin	N×2	
10	KB 2 4 0 0 8 1	Tension base (7)	1	
	KB 2 4 0 0 9 1	Tension base (5)	1	
11	HP 2 4 1 3 8 1	Tension earth plate (7)	1	
	HP 2 4 1 3 7 1	Tension earth plate (5)	1	
12	HP 2 4 1 3 9 0	Tension earth cable	1	
13	KN 5 4 0 7 2 0	Switch cable 3	1	
14	KN 5 4 0 6 5 0	P.C board BAP-303	1	
15	KN 5 4 0 5 8 1	Tension base (7)	1	
	KN 5 4 0 5 7 1	Tension base (5)	1	
16	HP 2 4 1 1 6 0	Upper thread sensorium pin	N×1	
17	HP 2 4 1 4 5 0	Thread guid felt fixing plate (5)	1	
18	HP 2 4 1 1 7 0	First thread guide (5)	1	
19	HP 2 4 1 1 5 0	Base (with screw)	N×1	
20	KN 5 4 0 7 6 0	Dial type tension unit complete	N×1	
21	HB 2 4 0 2 6 0	Second thread guide plate (7)	1	
	HB 2 4 0 2 7 0	Second thread guide plate (5)	1	
22	HP 2 4 1 4 8 0	Thread guide felt (7)	1	
	HP 2 4 1 4 7 0	Thread guide felt (5)	1	
23	KN 5 4 0 6 2 0	P.C board BAP-301	1	
24	KN 5 4 0 7 5 0	Thread cut cable	1	
25	KN 5 4 0 7 3 0	Jamp cable 4	2	
26	KN 5 4 0 7 0 0	Cable 1	2	
27	HP 7 1 0 7 9 1	Spool holder base	1	
28	KN 5 4 0 7 8 0	Tension base label	1	
29	KN 5 4 0 6 0 0	Board fixing nut	8	
30	HP 5 4 1 0 7 0	Spool holder fixing spacer	1	
31	KN 5 4 0 8 1 1	P.C board BAP-304	1	
32	KN 5 4 0 8 2 0	Power box K50-12	1	
33		Pan screw M1×3		
34		Hex. nut M8		
35		Truss screw M3×5		
36		Truss screw M4×6		
37		Set screw M4×6		
38		Tapping pan screw 3.5×8		

I N D E X

L I S T No	PAGE No	ITEM	L I S T No	PAGE No	ITEM
1AHB2024053045G	3	4	A 9 0 1 2 1 9 0	9	2 0
1BHB2024053045G	3	1 7	A 9 0 1 2 2 1 3	3	5
1EHB20240530J	3	2 6	A 9 0 1 2 2 1 9	2 1	2 6
1FM2024053045G	1 7	3	A 9 0 1 2 2 9 1	9	7 3
1 J P 2 0 2 4 0	3 1	1	A 9 0 1 3 0 4 5	3 3	2 6
1KHB2024053045G	3	1	A 9 0 1 3 0 4 5	3 7	4 3
1SHB20240530J	3	7	A 9 0 1 4 0 2 2	5	5
A 9 0 1 0 0 0 1	1 5	8	A 9 0 1 4 0 5 1	9	6 7
A 9 0 1 0 0 1 7	7	1 5	A 9 0 2 0 0 9 8	2 1	6
A 9 0 1 0 1 0 0	5	1 8	A 9 0 2 0 0 9 8	2 3	7
A 9 0 1 0 1 0 1	5	1 7	A 9 0 2 0 1 3 1	1 3	1 8
A 9 0 1 0 1 0 2	5	1 9	A 9 0 2 0 2 0 3	1 3	1 0
A 9 0 1 1 0 2 1	7	2 4	A 9 0 5 2 0 0 5	3 5	1 4
A 9 0 1 1 0 2 1	9	2 2	A 9 0 5 2 0 2 4	2 1	3 1
A 9 0 1 1 0 2 2	9	2 3	A 9 0 5 2 0 2 4	2 3	3 0
A 9 0 1 1 0 2 3	9	2 1	A 9 0 5 2 0 2 8	3 7	2 0
A 9 0 1 1 0 3 5	1 3	3 0	A 9 0 5 2 0 3 0	2 1	3 0
A 9 0 1 1 0 3 5	2 3	6 8	A 9 0 5 2 0 3 0	2 3	4
A 9 0 1 1 0 4 0	1 3	2 6	A 9 0 5 2 0 3 1	2 1	3 4
A 9 0 1 1 0 6 3	2 1	1 8	A 9 0 5 2 0 3 1	2 3	3 1
A 9 0 1 1 0 6 3	2 3	3 6	A 9 0 5 6 0 1 0	3 3	9
A 9 0 1 1 1 1 1	5	1 5	A 9 0 5 6 0 1 1	1 5	3 1
A 9 0 1 1 1 5 2	7	2 3	A 9 0 5 6 0 1 3	3 7	4 1
A 9 0 1 2 0 0 1	1 5	2 4	A 9 0 5 6 0 1 8	3 7	1 0
A 9 0 1 2 0 0 2	1 5	3 0	A 9 0 5 6 0 2 0	9	5 6
A 9 0 1 2 0 0 2	3 5	3 0	A 9 0 6 5 0 2 8	3 5	2 7
A 9 0 1 2 0 0 3	9	6 4	E A Y 0 1 7 A 1	2 5	1
A 9 0 1 2 0 0 5	9	6 4	E A Y 0 1 7 A 2	2 5	2 5
A 9 0 1 2 0 5 1	9	5 3	E A Y 0 1 7 A 3	2 5	1 6
A 9 0 1 2 0 5 2	2 1	2 4	E A Y 0 1 8 A 3	2 5	1 6
A 9 0 1 2 0 5 2	2 3	2 3	E A Y 0 2 1 A 1	2 7	1
A 9 0 1 2 0 5 3	9	7 5	E A Y 0 2 1 A 2	2 7	2 4
A 9 0 1 2 0 5 5	1 5	3 4	E A Y 0 2 1 A 3	2 7	2 5
A 9 0 1 2 0 5 6	3 7	3 4	E A Y 0 2 1 A 3	2 9	2 5
A 9 0 1 2 0 6 8	1 3	2 2	E A Y 0 2 2 A 3	2 7	2 5
A 9 0 1 2 1 2 6	1 9	1 1	E A Y 0 2 2 A 3	2 9	2 5
A 9 0 1 2 1 2 6	2 1	4 0	E A Y 0 2 3 A 1	2 9	1
A 9 0 1 2 1 2 6	2 3	1 3	E B Y 0 0 1 8 0	1 5	4
A 9 0 1 2 1 2 7	1 9	1 3	E B Y 0 0 4 5 0	2 5	2
A 9 0 1 2 1 2 7	2 1	3 6	E B Y 0 0 4 6 0	2 5	3
A 9 0 1 2 1 2 7	2 3	1 1	E B Y 0 0 4 7 0	2 5	4
A 9 0 1 2 1 4 3	1 5	3 8	E B Y 0 0 4 8 0	2 5	7
A 9 0 1 2 1 6 3	7	1 6	E B Y 0 0 4 9 0	2 5	5
A 9 0 1 2 1 6 4	9	9	E B Y 0 0 5 0 0	2 5	6
A 9 0 1 2 1 8 8	1 3	3 8	E B Y 0 0 5 1 0	2 7	2 1

I N D E X

LIST No.	PAGENO.	ITEM	LIST No.	PAGENO.	ITEM
EBY 005 10	25	31	HB 23006 1	7	9
EBY 005 10	29	21	HB 23007 0	7	8
EBY 005 20	27	20	HB 23008 0	7	7
EBY 005 20	25	30	HB 23009 0	7	18
EBY 005 20	29	20	HB 23010 0	7	1
EBY 005 30	27	9	HB 23011 0	7	5
EBY 005 30	25	28	HB 23012 0	7	27
EBY 005 30	29	9	HB 23013 0	7	29
EBY 005 40	27	8	HB 23014 0	9	24
EBY 005 40	25	27	HB 23015 0	7	25
EBY 005 40	29	8	HB 23016 0	7	34
EBY 005 50	27	10	HB 23016 0	9	10
EBY 005 50	25	29	HB 23017 0	9	25
EBY 005 50	29	10	HB 23018 0	9	43
EBY 005 60	27	22	HB 23019 0	9	46
EBY 005 60	25	32	HB 23020 0	9	12
EBY 005 60	29	22	HB 23021 0	9	13
EBY 005 70	27	7	HB 23022 0	9	4
EBY 005 70	25	26	HB 23023 1	9	11
EBY 005 70	29	7	HB 23024 0	9	3
EBY 006 30	27	23	HB 23025 0	9	8
EBY 006 30	25	38	HB 23026 0	9	1
EBY 006 30	29	23	HB 23027 0	9	2
EBY 008 00	11	12	HB 23028 0	9	7
EBY 009 30	29	2	HB 23029 0	7	22
EBY 009 40	27	4	HB 23030 0	7	28
EBY 009 40	29	3	HB 23031 0	7	30
EBY 009 50	27	5	HB 23032 0	7	2
EBY 009 50	29	6	HB 23033 0	7	3
EBY 009 70	27	3	HB 23034 0	7	12
EBY 009 80	27	6	HB 23035 0	9	5
EBY 009 90	27	2	HB 23036 0	9	6
EBY 021 A 2	29	24	HB 23037 1	9	14
HB 13001045	3	34	HB 23038 1	9	17
HB 130020	13	35	HB 23039 0	9	18
HB 130020	23	70	HB 23040 1	9	19
HB 130030	13	35	HB 23041 4	9	15
HB 130030	23	71	HB 23042 0	9	16
HB 210010	7	17	HB 23043 1	9	41
HB 220010	5	8	HB 23044 1	9	41
HB 230011	7	13	HB 23045 0	9	60
HB 230020	7	11	HB 23046 0	9	58
HB 230030	7	14	HB 23047 0	9	59
HB 230040	7	19	HB 23048 1	7	26
HB 230050	7	10	HB 23049 1	7	9

I N D E X

LIST No.	PAGENO.	ITEM	LIST No.	PAGENO.	ITEM
HB 2 3 0 5 1 0	9	2 9	HB 3 1 0 1 6 0	1 3	2 9
HB 2 3 0 5 2 1	9	2 8	HB 3 1 0 1 7 0	1 3	1 3
HB 2 3 0 5 3 1	9	2 7	HB 3 1 0 1 8 0	3	2 9
HB 2 3 0 5 4 0	9	3 0	HB 3 1 0 1 9 0	1 3	1
HB 2 3 0 5 5 0	9	4 0	HB 3 1 0 2 0 0	1 3	2
HB 2 3 0 5 9 0	9	6 8	HB 3 1 0 2 1 0	1 3	3
HB 2 4 0 0 1 0	9	5 7	HB 3 1 0 2 2 0	1 3	2 7
HB 2 4 0 0 2 0	9	6 1	HB 3 1 0 2 3 0	2 3	4 4
HB 2 4 0 0 3 0	9	6 2	HB 3 2 0 0 3 0	5	1 6
HB 2 4 0 0 4 0	9	6 6	HB 3 2 0 0 5 0	5	1 6
HB 2 4 0 0 5 0	9	6 5	HB 3 3 0 0 1 0	1 5	1 3
HB 2 4 0 0 6 0	9	4 8	HB 3 3 0 0 2 0	1 5	5
HB 2 4 0 0 7 0	9	5 2	HB 3 3 0 0 3 0	1 5	2 1
HB 2 4 0 0 8 0	9	5 0	HB 3 3 0 0 4 0	1 5	2 2
HB 2 4 0 0 9 0	9	4 9	HB 3 3 0 0 5 0	1 5	3 6
HB 2 4 0 1 1 0	9	5 1	HB 3 3 0 0 6 0	1 5	3 2
HB 2 4 0 1 5 1	7	2 1	HB 3 3 0 0 7 0	1 5	1 9
HB 2 4 0 1 6 1	7	3 2	HB 3 3 0 0 8 0	1 5	3 3
HB 2 4 0 1 7 1	7	3 3	HB 3 3 0 0 9 0	1 5	1 8
HB 2 4 0 1 8 0	7	2 0	HB 3 3 0 1 0 1	1 5	3 7
HB 2 4 0 2 0 0	1 1	1 7	HB 3 3 0 1 1 0	1 5	9
HB 2 4 0 2 1 0	1 1	1 8	HB 3 3 0 1 2 0	1 5	2 0
HB 2 4 0 2 2 0	1 1	1 9	HB 3 3 0 1 3 0	1 5	7
HB 2 4 0 2 3 0	1 1	2 1	HB 3 3 0 1 4 0	1 5	1
HB 2 4 0 2 4 0	1 1	2 2	HB 3 3 0 1 5 0	1 5	1 7
HB 2 4 0 2 5 0	1 1	2 3	HB 3 3 0 1 7 0	1 5	6
HB 2 4 0 2 6 0	1 1	1 1	HB 3 3 0 1 9 0	1 5	1 6
HB 2 4 0 2 7 0	1 1	1 1	HB 3 3 0 2 0 0	1 5	1 5
HB 2 4 0 2 8 0	7	3 3	HB 3 3 0 2 1 1	1 5	1 1
HB 2 4 0 2 9 0	7	2 0	HB 3 3 0 2 2 1	1 5	1 0
HB 2 4 0 3 0 0	1 1	1 3	HB 4 8 0 0 1 0	2 3	3 3
HB 3 1 0 0 1 0	2 3	3 9	HB 5 4 0 0 2 0	3 9	4 3
HB 3 1 0 0 2 0	1 3	1 1	HH 1 4 0 2 6 0	3	1 0
HB 3 1 0 0 3 0	2 3	4 0	HH 1 4 0 9 4 0	3	3 6
HB 3 1 0 0 4 0	1 3	1 2	HH 2 2 0 5 7 0	5	1 3
HB 3 1 0 0 5 0	1 3	1 6	HH 3 2 0 5 5 0	1 3	3 1
HB 3 1 0 0 6 0	1 3	2 8	HH 3 3 0 6 7 0	1 5	4 1
HB 3 1 0 0 7 0	1 3	1 5	HH 3 3 0 7 6 0	3 5	2 3
HB 3 1 0 0 8 0	1 3	2 1	HH 3 3 0 7 7 0	1 5	2 7
HB 3 1 0 1 0 0	1 3	1 9	HH 3 3 0 8 1 0	1 5	1 4
HB 3 1 0 1 1 0	1 3	1 4	HH 4 8 1 9 0 0	2 1	1 2
HB 3 1 0 1 2 0	1 3	2 4	HH 4 8 1 9 0 0	2 3	4 2
HB 3 1 0 1 3 0	1 3	2 5	HH 4 8 1 9 1 1	2 1	1 3
HB 3 1 0 1 4 0	1 3	3 3	HH 4 8 1 9 1 1	2 3	4 3
HB 3 1 0 1 5 0	1 3	2 3	HH 4 8 1 9 3 1	2 1	1 1

I N D E X

LIST No	PAGENO	ITEM	LIST No	PAGENO	ITEM
HP 45112G530	23	28	HP 512320	3	22
HP 460121	19	9	HP 512320	27	29
HP 460160	19	12	HP 512320	25	12
HP 460160	21	37	HP 512330	25	10
HP 460160	23	12	HP 512340	25	9
HP 460170	19	10	HP 512350	25	8
HP 460170	21	38	HP 512360	27	31
HP 460170	23	14	HP 512360	29	29
HP 480120	17	7	HP 512370	27	27
HP 48217G530	23	26	HP 512370	29	27
HP 48221G530	17	6	HP 540840	39	47
HP 482250	21	39	HP 540850	39	45
HP 482260	21	43	HP 540860	39	44
HP 482270	21	41	HP 541070	39	30
HP 482280	21	44	HP 710791	31	4
HP 482290	23	16	HP 710791	39	27
HP 482560	23	17	HP 711200	31	6
HP 482570	23	18	HPS 12320	29	4
HP 482580	23	15	HP 14010085	3	18
HP 482590	21	42	HU 315290	13	9
HP 48281A60	19	8	KB 240060	11	16
HP 48282G45	19	5	KB 240070	11	16
HP 482871	21	2	KB 240081	39	10
HP 482881	19	1	KB 240091	39	10
HP 482892	23	5	KB 240100	11	15
HP 48290G45	17	5	KB 240260	39	21
HP 482910	19	6	KB 240270	39	21
HP 482910	21	22	KC 140121	3	23
HP 482910	23	24	KC 270101	37	40
HP 482920	19	7	KC 270271	37	28
HP 482940	21	9	KC 270282	37	24
HP 482940	23	8	KC 270292	37	29
HP 482950	19	4	KC 270301	37	27
HP 482950	21	5	KC 270400	37	38
HP 482950	23	6	KC 270761	37	23
HP 482980	21	25	KC 270960	33	23
HP 482980	23	22	KC 270970	33	3
HP 482990	21	17	KC 270980	33	24
HP 482990	23	37	KC 271440	35	2
HP 483111	23	1	KC 30230	27	14
HP 48313G45	21	1	KC 320820	13	32
HP 483370	19	3	KC 330170	15	3
HP 483370	23	2	KC 330180	35	3
HP 483391	21	3	KC 330280	15	2
HP 512310	25	11	KC 330310300	9	63

I N D E X

LIST No.	PAGENO.	ITEM	LIST No.	PAGENO.	ITEM
KC330310300	15	23	KF530150	27	15
KC330410	9	54	KF530150	25	18
KC330420	15	12	KF530150	29	15
KC330410	15	26	KF530160	27	11
KC330410	35	25	KF530160	25	21
KC520020	27	17	KF530160	29	11
KC520020	25	13	KF530170	27	19
KC520020	29	17	KF530170	25	23
KC530230	25	17	KF530170	29	19
KC530230	29	14	KF710280	31	3
KC530240	27	12	KF710390	31	16
KC530240	25	20	KF710410	31	18
KC530240	29	12	KF730790	17	1
KC710270	31	17	KG230020	9	31
KC710410	31	18	KG241020	11	5
KF220302	5	6	KG241031	31	5
KF220410	5	7	KG241031	39	1
KF220421	5	7	KG250010	11	20
KF220440	5	6	KG270283	37	24
KF220510	5	14	KG270310	37	26
KF220780	5	8	KG270760	37	23
KF230210	9	38	KG710161	31	7
KF230230	9	34	KL220140	5	12
KF230240	9	35	KL230280	9	44
KF230250	9	36	KL270000	37	30
KF230500	7	6	KL270010	37	32
KF230580	7	31	KL270020	37	31
KF230580	37	25	KL270030	37	33
KF230630	15	35	KL270040	37	35
KF230640	9	47	KL270050	37	36
KF230640	33	14	KL270060	37	37
KF230661	9	45	KL270070	37	39
KF230670	9	42	KL270081	37	11
KF230910	9	39	KL270091	37	21
KF230920	9	32	KL270101	37	15
KF230930	9	33	KL270110	37	18
KF240900	31	2	KL270120	37	17
KF250900	5	25	KL270130	37	16
KF330381	9	55	KL270140	37	14
KF530111	27	13	KL270150	37	13
KF530111	25	19	KL270260	37	19
KF530111	29	13	KL270400	37	47
KF530120	27	13	KL270410	37	42
KF530120	25	19	KL270420	37	45
KF530120	29	13	KL270430	37	44

I N D E X

LIST No.	PAGE No.	ITEM	LIST No.	PAGE No.	ITEM
KL 2 7 0 4 4 0	3 7	4 6	KN 5 4 0 6 0 0	3 9	2 9
KL 2 7 0 4 5 0	3 7	5 0	KN 5 4 0 6 1 0	3 9	7
KN 2 3 1 3 5 0	9	2 6	KN 5 4 0 6 2 0	3 9	2 3
KN 2 3 1 7 0 0	9	3 7	KN 5 4 0 6 3 0	3 9	2
KN 2 7 0 9 5 0	3 3	7	KN 5 4 0 6 4 0	3 9	2
KN 2 7 1 1 9 0	3 3	2 1	KN 5 4 0 6 5 0	3 9	1 4
KN 2 7 1 2 2 0	3 3	1 8	KN 5 4 0 6 7 0	3 9	4 6
KN 2 7 1 5 2 1	3 3	1	KN 5 4 0 7 0 0	3 9	2 6
KN 2 7 1 5 6 0	3 3	4	KN 5 4 0 7 1 0	3 9	3
KN 2 7 1 6 0 2	3 3	6	KN 5 4 0 7 2 0	3 9	1 3
KN 2 7 1 6 1 0	3 3	5	KN 5 4 0 7 3 0	3 9	2 5
KN 2 7 1 6 2 0	3 3	8	KN 5 4 0 7 5 0	3 9	2 4
KN 2 7 1 6 3 0	3 3	1 0	KN 5 4 0 7 6 0	3 9	2 0
KN 2 7 1 6 4 3	3 3	1 1	KN 5 4 0 7 8 0	3 9	2 8
KN 2 7 1 6 5 1	3 3	1 2	KN 5 4 0 8 1 1	3 9	3 1
KN 2 7 1 6 6 2	3 3	1 3	KN 5 4 0 8 2 0	3 9	3 2
KN 2 7 1 6 7 0	3 3	1 5	KU 2 4 1 4 0 0	1 1	1 4
KN 2 7 1 7 1 2	3 5	8	KU 4 6 0 2 7 0	2 1	4
KN 2 7 1 7 2 0	3 5	2 4	KU 4 6 0 2 7 0	2 3	2 7
KN 2 7 1 7 3 1	3 5	1 5	MT 4 6 0 2 4 0	2 1	2 3
KN 2 7 1 7 5 0	3 5	1 1	MT 4 6 0 2 4 0	2 3	2 9
KN 2 7 1 7 8 1	3 5	1 0	WW 1 4 0 0 7 0	3	2
KN 2 7 1 8 0 0	3 5	2 9			
KN 2 7 1 9 8 0	3 3	2			
KN 2 7 1 9 9 0	3 5	9			
KN 2 7 2 3 5 0	3 5	1 2			
KN 2 7 2 5 4 0	3 3	1 9			
KN 3 1 0 0 0 0	1 3	4			
KN 3 1 0 0 1 0	1 3	5			
KN 3 1 0 2 2 0	1 3	8			
KN 3 1 3 6 7 0	1 3	6			
KN 3 1 5 1 1 0	1 3	7			
KN 4 5 0 3 0 0	2 1	3 5			
KN 4 5 0 3 0 0	2 3	3 2			
KN 4 8 0 0 6 1	2 1	1 5			
KN 4 8 0 0 6 1	2 3	2 5			
KN 5 1 1 0 2 0	5	2 4			
KN 5 4 0 5 0 0	3 9	8			
KN 5 4 0 5 1 0	3 9	6			
KN 5 4 0 5 2 0	3 9	5			
KN 5 4 0 5 3 0	3 9	4			
KN 5 4 0 5 4 0	3 9	4			
KN 5 4 0 5 7 1	3 9	1 5			
KN 5 4 0 5 8 1	3 9	1 5			
KN 5 4 0 5 9 0	3 9	9			